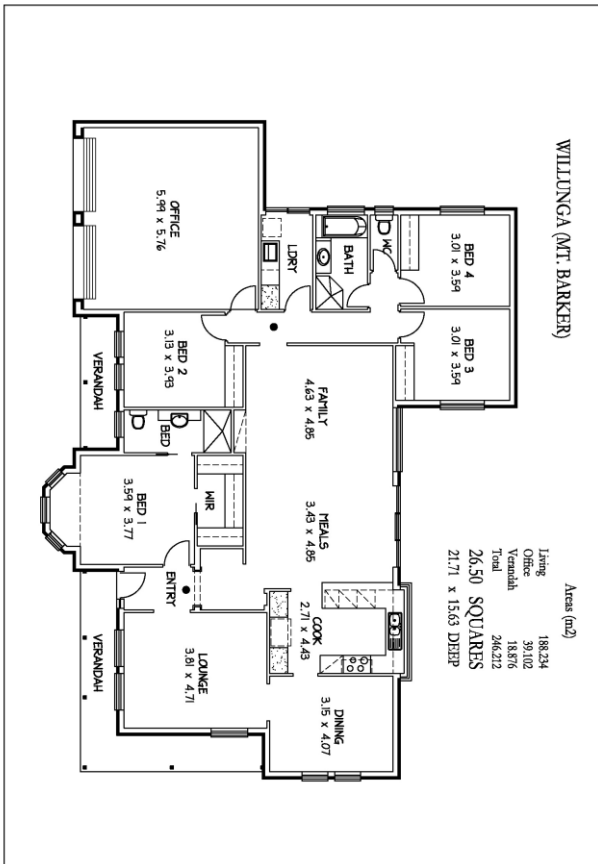


House & Land Package



WILLUNGA

27 RED RD, BLACKWOOD

This package includes:

- 1040m² of land
- Rossdale Homes Willunga built to Sovereign specifications
- 2.7m ceilings to home
- Double garage with Automatic Panel Lift doors & internal access
- 4 well sized bedrooms with master bedroom to the front
- Quality Westinghouse appliances including retracta range-hood set in overhead cupboards
- Gas Instantaneous hot water system
- 100% Absolute Fixed Price Contract with no hidden costs
- Insulation to ceiling and external walls
- Healthy footings allowance including all soil removal from site
- Built In Robes to bedrooms Included
- Rainwater connection to WC
- More options available, call today to find out more

HOUSE AND LAND FROM: **\$674,877**

Images for illustration purposes only.

FOR THIS OFFER CALL
PHONE: LEON 0402 47 1977

Because trust is a must
www.rossdalehomes.com.au