

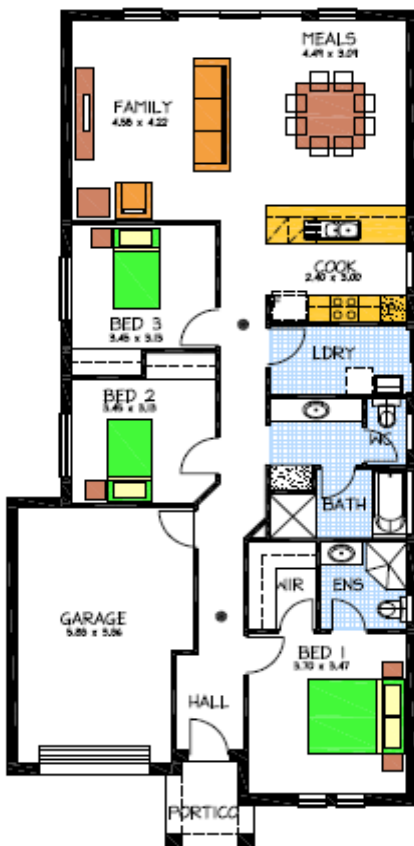
House & Land Package



THE MARDEN

Address 97 Daveys Road Flagstaff Hill
This package includes:

- Rossdale Sovereign Specification
- 2.4m high ceilings
- Render to Front Elevation
- Remote to roller door
- Open plan Family meals area
- Stainless steel appliances
- Robes to Bed 2 and 3
- WIR and ensuite to Bed 1
- Bushfire requirements included
- Located in a quiet Cul de sac looking over Golf Course
- Soil Testing done
- Built to an Absolute Fixed Priced Contract



PACKAGE FROM \$381,000

HOME: \$ 171,000 LAND: \$210,000

Disclaimer: All care has been taken in the preparation of this material. No responsibility is taken for any errors or omissions. Details are subject to change without notification. Images for illustration purposes only. E&EO.

FOR THIS OFFER CALL

JOHN 0423 337 020

Because trust is a must

www.rossdalehomes.com.au