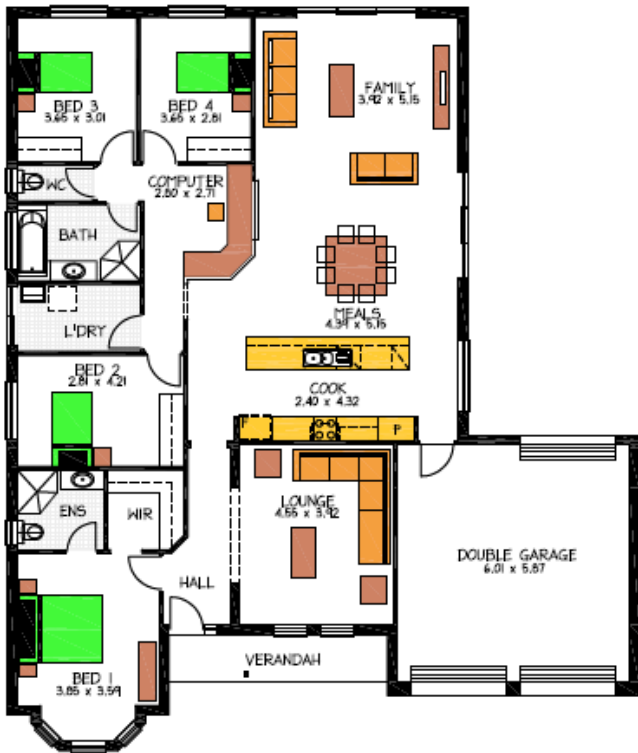


House & Land Package



THE VERDUN

Address Lot 22 Boettcher Rd, Goolwa

This package includes:

- Land Price
- Ducted air-con
- Flooring to whole of house
- Perimeter paving
- Driveway
- Aerobic septic tank
- O/head c/boards to kitchen
- CADDs energy assessment
- Insulation
- NBN ready
- Telstra land line
- Built In robes

Disclaimer: All care has been taken in the preparation of this material. No responsibility is taken for any errors or omissions. Details are subject to change without notification. Images for illustration purposes only. E&EO.

PACKAGE FROM: **\$440,000**

HOME\$240000

LAND\$200,000

FOR THIS OFFER CALL

ROB PHILLIPS 0403377987

Because trust is a must

www.rossdalehomes.com.au