

# House & Land Package



## THE WISTOW

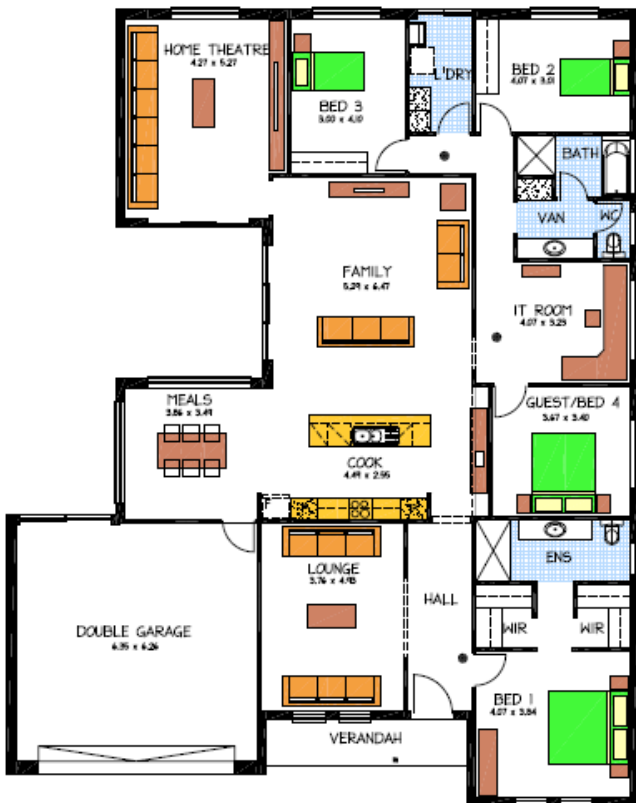
Address : Lot 21 Boettcher St, Goolwa

This package includes:

- Land Price
- Insulation
- Flooring to whole of house
- Ducted reverse cycle air con
- Driveway
- perimeter paving
- septic tank
- CADDs energy assessment
- O/h C/boards to kitchen
- Built In robes
- NBN ready
- Telstra land line

PACKAGE FROM: \$431,000

HOME: \$231,000 LAND: \$200000



Disclaimer: All care has been taken in the preparation of this material. No responsibility is taken for any errors or omissions. Details are subject to change without notification. Images for illustration purposes only. E&EO.

FOR THIS OFFER CALL

**ROB PHILLIPS 0403377987**

*Because trust is a must*

[www.rossdalehomes.com.au](http://www.rossdalehomes.com.au)