



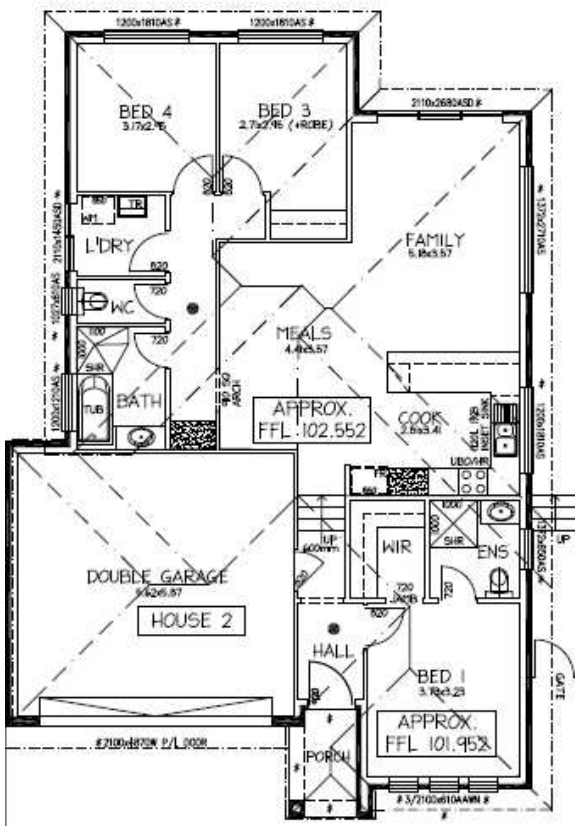
**Rossdale
Homes**

Because trust is a must

House & Land Package



House 2 lot 39 Beltana Ave, Modbury North



This package includes:

- Total site area is 341sqm with 12.5m frontage
- Special design built to Rossdale's Sovereign Specification
- Smart design Including 3 bedrooms and 2 living areas
- 2.7m ceiling height
- Double garage with automatic panel lift doors and internal access
- WIR & Ensuite to master bedroom
- 1500L rainwater tank and 2500L stormwater tank
- Septic to CED due to the council requirement
- Instantaneous Hot Water System
- Westinghouse kitchen wares including dishwasher
- Fixed price on footing and siteworks
- Fixed Price Quotation Including engineers footing report before signing contract
- 25 Year Structural Warranty
- Easy finance

PACKAGE FROM: \$415,490

HOME: \$201,890 LAND: \$213,600

Disclaimer: All care has been taken in the preparation of this material. No responsibility is taken for any errors or omissions. Details are subject to change without notification. Images for illustration purposes only. E&EO.

FOR THIS OFFER CALL
CHEN 0449 254 211

Because trust is a must
www.rossdalehomes.com.au