

House & Land Package



THE KYTON

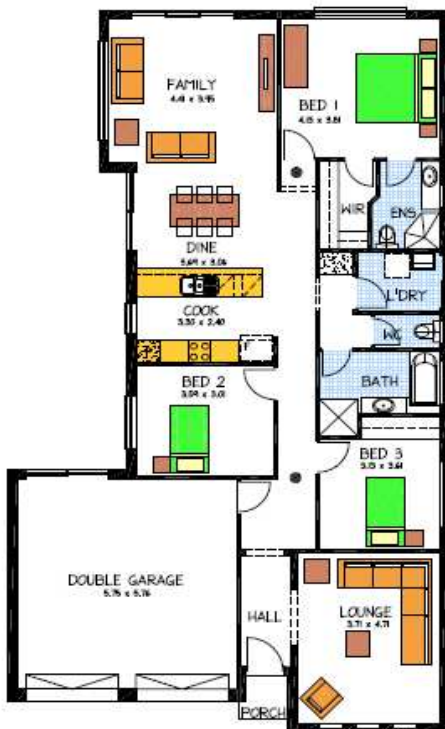
Allotment 25 Onkaparinga Rise

This package includes:

- Rossdale Homes 'Kyton' design built to Select specification
- 3 Bedroom
- 2 Bathrooms
- 2 Separate living areas
- Healthy footings allowance with all excess soil removed from site
- Front elevation is rendered and painted allowing 2 colors along with Rusitc Bookleaf Stack Stone to brick pier
- Double garage with automatic roller doors and internal access
- All services are included along with NBN ready.
- All cabinetry is included with overhead cupboards to kitchen, built in robe to bedroom 3 and all laundry and linen cupboards
- Quality Westinghouse appliances including retracta range-hood & instantaneous hot water system
- Ceiling, external and internal wall insulations
- 2500 litre rainwater tank with rain bank

Extra options available for this package are:

Flooring, air-conditioning, storm-water disposal, paths, driveway, fencing, rear landscaping, pergola etc.



Disclaimer: All care has been taken in the preparation of this material. No responsibility is taken for any errors or omissions. Details are subject to change without notification. Images for illustration purposes only. E&EO.

PACKAGE FROM: \$377,750

HOME: \$194,250 LAND: \$183,500

FOR THIS OFFER CALL

JULIE 0409 677 794

Because trust is a must

www.rossdalehomes.com.au