

House & Land Package



THE KYTON

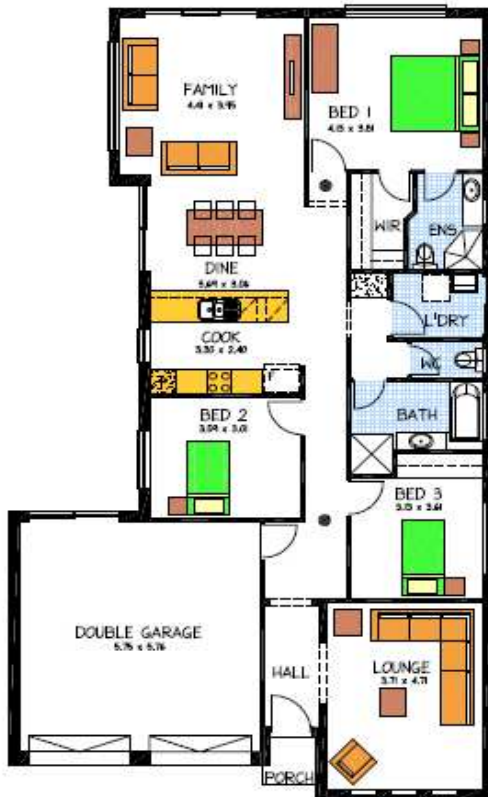
Lot 38 Onkaparinga Rise

This package includes:

- Rossdale Homes 'Kyton' design built to Select specification
- 3 Bedrooms
- 2 Bathrooms
- 2 Separate living areas
- Healthy footings allowance with all excess soil removed from site
- Split Level to home as required
- Front elevation is rendered and painted allowing 2 colors along with Rusitic Bookleaf Stack Stone to brick pier
- Double garage with automatic roller doors and internal access
- All services are included along with NBN ready.
- All cabinetry is included with overhead cupboards to kitchen, built in robe to bedroom 3 and all laundry and linen cupboards
- Quality Westinghouse appliances including retracta range-hood & instantaneous hot water system
- Ceiling, external and internal wall insulations
- 2500 litre rainwater tank with rain bank

Extra options available for this package are:

Rainwater tank, flooring, air-conditioning, storm-water disposal, paths, driveway, fencing, rear landscaping, pergola etc.



Disclaimer: All care has been taken in the preparation of this material. No responsibility is taken for any errors or omissions. Details are subject to change without notification. Images for illustration purposes only. E&EO.

PACKAGE FROM: \$411,700

HOME: \$228,200 LAND: \$183,500

FOR THIS OFFER CALL

GUY 0411 176 020

Because trust is a must

www.rossdalehomes.com.au