

House & Land Package



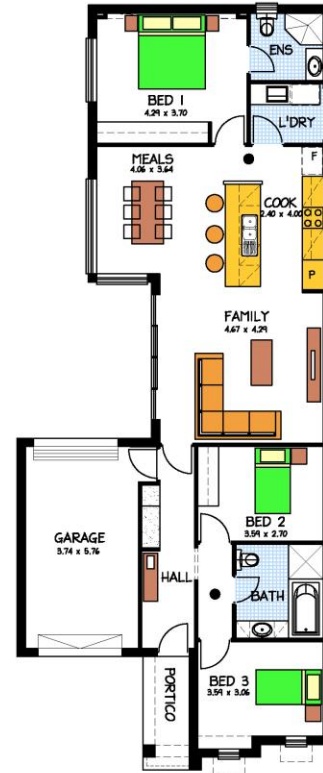
CONDON DRIVE LIGHTSVIEW SA 5085

ALLENBY VILLA - Blakes Crossing

Areas (m ²)	
Living	122.619
Garage	22.164
Porch	4.389

Total 149.172

16.05 SQUARES
8.98 x 21.82 DEEP



This package includes:

- Total site area is 275sqm with 10m frontage
- Allenby Villa Design to Rossdale's Sovereign Specification (total house area:149.2sqm)
- Smart design Including 3 bedrooms and 2 living areas
- 2.7m ceiling height to both floors
- Front loader garage and internal access
- WIR & Ensuite to master bedroom
- Instantaneous Hot Water System
- Optical cable network ready
- Westinghouse kitchen wares
- Standard footings allowance
- Fixed Price Quotation Including engineers footing report before signing contract
- 25 Year Structural Warranty
- Easy finance
- Show home is available for inspection
- Other designs available

HOUSE & LAND PACKAGE

FROM: \$440,856

Home: \$175,856 Land: \$265,000

Images for illustration purposes only.

FOR THIS OFFER CALL

CHEN XIE

0449 254 211

Because trust is a must

www.rosdalehomes.com.au