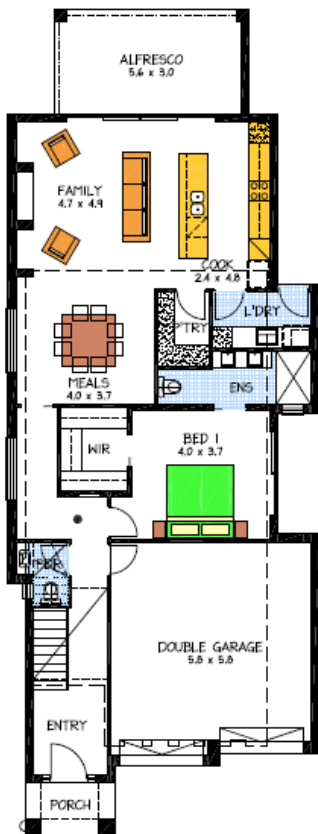
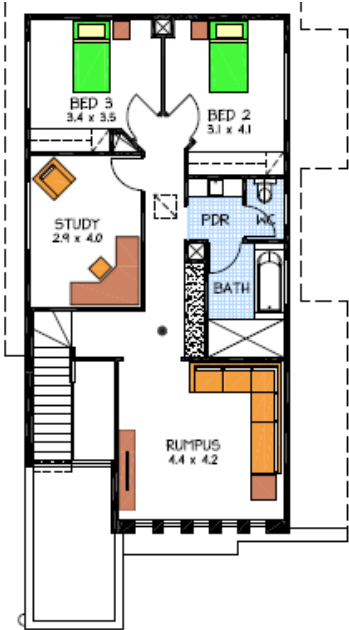


# House & Land Package



## THE HOLDFAST

### 6 Elm Grove, Magill

- Rossdale Sovereign Specification
- Front Elevation as shown
- Generous footing allowance
- Alfresco to rear
- Open plan Kitchen Family Meals
- Stainless steel appliances
- Stone bench tops
- Panasonic aircon
- Ensuite and WIR to master
- Large rumpus room

PACKAGE FROM: **\$781,500**

HOME: **\$330,000** LAND: **\$451,500**

Disclaimer: All care has been taken in the preparation of this material. No responsibility is taken for any errors or omissions. Details are subject to change without notification. Images for illustration purposes only. E&EO.

FOR THIS OFFER CALL

**JOHN 0423337020**

*Because trust is a must*

[www.rosdalehomes.com.au](http://www.rosdalehomes.com.au)