

House & Land Package



2 PETHICK TCE MARION SA 5043

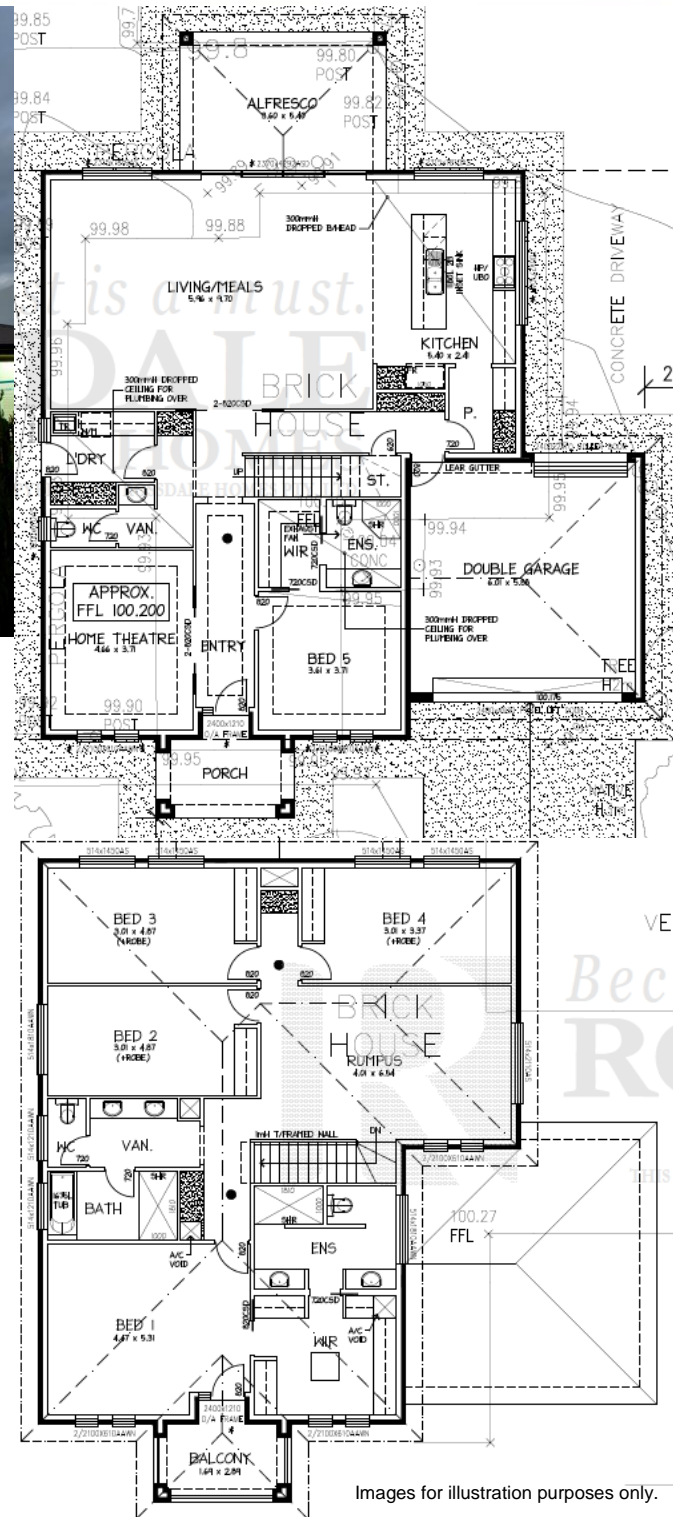
This package includes:

- Total site area is 965sqm with 19.81m frontage
- Rossdale's Sovereign Specification
- Smart design Including 5 bedrooms and 3 living areas
- 2.7m ceiling height to both floors
- Double garage and internal access
- Instantaneous Hot Water System
- Two master bedrooms with owned WIR and ENS
- Westinghouse kitchen wares
- Standard footings allowance
- Fixed Price Quotation Including engineers footing report before signing contract
- 25 Year Structural Warranty
- Other designs available

HOUSE & LAND PACKAGE

FROM: \$1,087,786

Home: \$389,786 Land: \$698,000



Images for illustration purposes only.

FOR THIS OFFER CALL

CHEN XIE

0449 254 211

Because trust is a must

www.rossdalehomes.com.au