



**Rossdale  
Homes**

*Because trust is a must*

# House & Land Package



## UNLEY COTTAGE

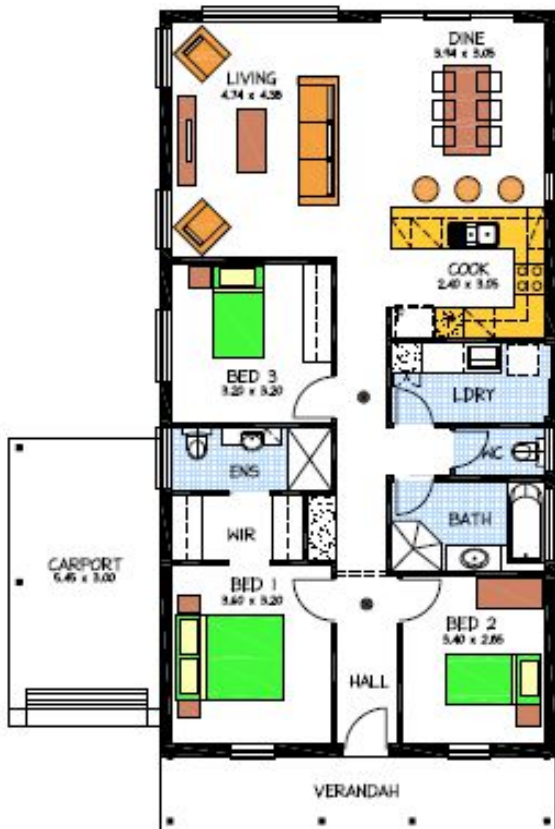
**Lot 5 Hayfield Estate MEADOWS**

**This package includes:**

- 999m<sup>2</sup> of land in the lovely township of Meadows
- Plenty of room to store a large caravan or boat on this block
- Walking distance to many shops, cafés and Bakeries
- Rossdale Homes Unley Cottage built to select specifications
- 2.7m ceilings throughout
- Beautiful 3 bedroom cottage with open living to rear of home
- Single Carport with Brick piers and Automatic roller door
- Master bedroom with walk in robe and Ensuite
- Quality Westinghouse appliances with retracta rangehood set in overhead cupboards and instantaneous hot water system
- Ceiling, external walls & internal walls are all insulated
- Bushfire Zone requirements are also taken care of
- NBN ready      LPG bottle ready
- Reclaimed water as required
- Healthy footings allowance with all excess soil removed
- 100% absolute fixed price contract
- 25 year structural warranty

More options available for this package, call now for more info

**PACKAGE FROM: \$312,450**



Disclaimer: All care has been taken in the preparation of this material. No responsibility is taken for any errors or omissions. Details are subject to change without notification. Images for illustration purposes only. E&EO.

FOR THIS OFFER CALL

**BRAD: 0421 940 398**

*Because trust is a must*

[www.rossdalehomes.com.au](http://www.rossdalehomes.com.au)