

# House & Land Package



## THE VERDUN

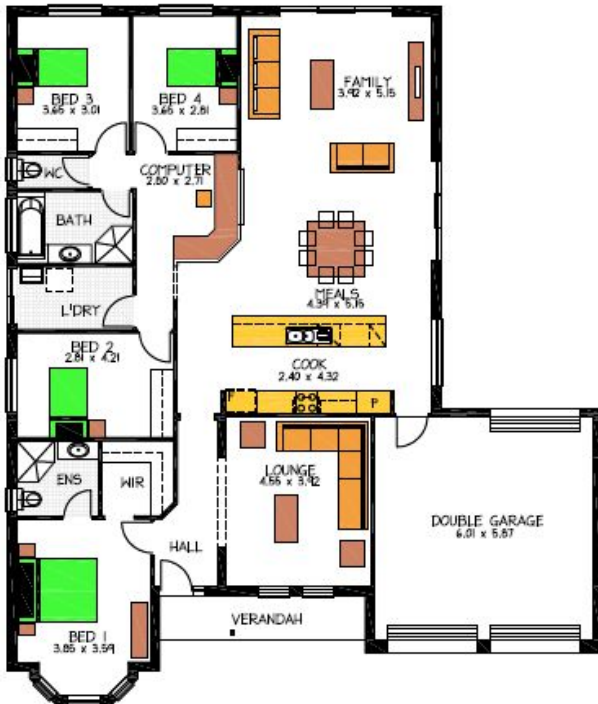
Lot 24 Shirax Court Myponga

This package includes:

- 565m<sup>2</sup> of land in the lovely township of Myponga
- Rossdale Homes Verdun built to Sovereign Specifications
- Front elevation with Queen Anne bay window along with rendered quoins and base course as above
- Double garage with automatic roller doors and internal access
- 2.7m ceilings to home and garage, 4 well sized bedrooms
- Master bedroom with Ensuite and walk in robe
- Built in robes to all other bedrooms
- Quality Westinghouse appliances to kitchen including retracta range-hood set in overhead cupboards
- Instantaneous hot water system for endless hot water
- All service connections are taken care of, LPG bottle ready
- Bushfire requirements including sarking are included
- Healthy footings allowance with all excess soil removed from site
- 25 Year Structural Warranty
- 100% Absolute Fixed Price Contract with no hidden costs

More options available for this package, call today to find out more

PACKAGE FROM: \$363,000



Disclaimer: All care has been taken in the preparation of this material. No responsibility is taken for any errors or omissions. Details are subject to change without notification. Images for illustration purposes only. E&EO.

FOR THIS OFFER CALL

BRAD: 0421 940 398

*Because trust is a must*

[www.rossdalehomes.com.au](http://www.rossdalehomes.com.au)