

House & Land Package



THE MARDEN

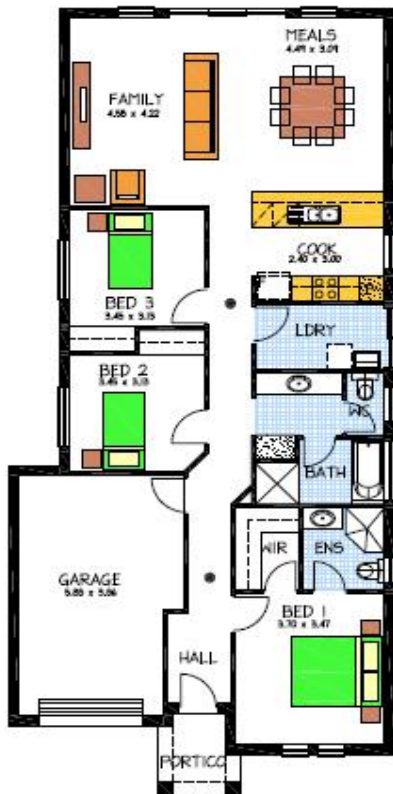
72 Sir Keith Smith Drv, North Haven

This package includes:

- 320m² of land
- Rossdale Homes Marden built to select specifications
- 2.7m ceilings to home
- Single garage with Automatic Panel Lift door & internal access
- 3 well sized bedrooms with open plan to the rear
- Master bedroom with walk in robe and Ensuite
- Quality Westinghouse appliances including retracta range-hood set in overhead cupboards
- Gas Instantaneous hot water system
- Rendered Portico as per plans
- Insulation to ceiling and external walls
- Healthy footings allowance including all soil removal from site
- Built In Robes to bedrooms Included
- Rainwater connection to WC
- 100% Absolute Fixed Price Contract with no hidden costs
- More options available, call today to find out more

PACKAGE FROM: \$387,684

Disclaimer: All care has been taken in the preparation of this material. No responsibility is taken for any errors or omissions. Details are subject to change without notification. Images for illustration purposes only. E&EO.



FOR THIS OFFER CALL

LEON: 0402 47 1977

Because trust is a must

www.rossdalehomes.com.au