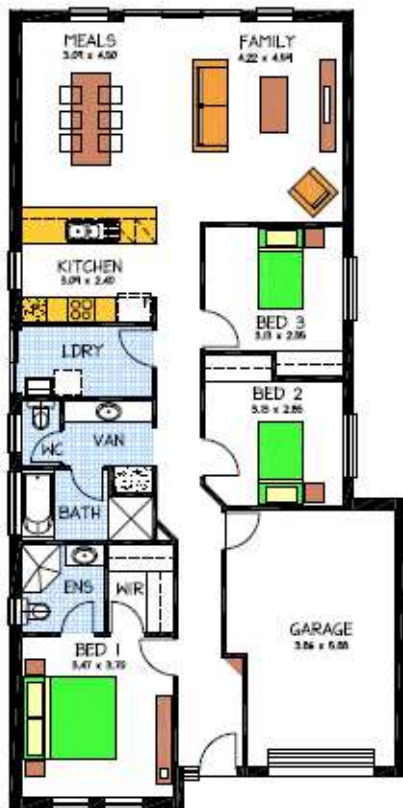


# House & Land Package



## THE OAKDEN

### Allotment 29 Onkaparinga Rise



#### This package includes:

- Rossdale Homes 'Oakden' design built to Sovereign specification
- 3 Bedroom
- 2 Bathroom
- Single Garage
- Healthy footings allowance with all excess soil removed from site
- Front elevation to have rendered and painted quoins as illustrated
- Automatic roller door with internal access into home
- All services are included along with NBN ready
- All cabinetry is included with overhead cupboards to kitchen, built in robes to bedrooms 2 & 3 and all laundry and linen cupboards
- Quality Westinghouse appliances including retracta range-hood & instantaneous hot water system
- Ceiling, external and internal wall insulation
- 2500 litre rain water tank with rain bank

#### Extra options available for this package are:

Flooring, air-conditioning, storm-water disposal, paths, driveway, fencing, landscaping, pergola etc.

Disclaimer: All care has been taken in the preparation of this material. No responsibility is taken for any errors or omissions. Details are subject to change without notification. Images for illustration purposes only. E&EO.

**PACKAGE FROM: \$329,950**

**HOME: \$177,450 LAND: \$152,500**

FOR THIS OFFER CALL

**JULIE 0409 677 794**

*Because trust is a must*

[www.rossdalehomes.com.au](http://www.rossdalehomes.com.au)