



**Rossdale  
Homes**

*Because trust is a must*

## House & Land Package



### OAKDEN 108

**Allotment 23, 24 or 27 Rosewood Ave,  
Elizabeth North (Rosewood Grove)**

**This package includes:**

- 3 Bedrooms all with robes
- Spacious meals & family area
- Galley Kitchen with ample cupboards
- Stainless Steel Appliances
- Overhead cupboards Excellent fixtures & fittings throughout
- Excellent fixtures & fittings throughout
- Double carport with roller doors
- Rendered scalloped quoins to front elevation
- Insulation to walls & ceilings
- Generous Footings allowance

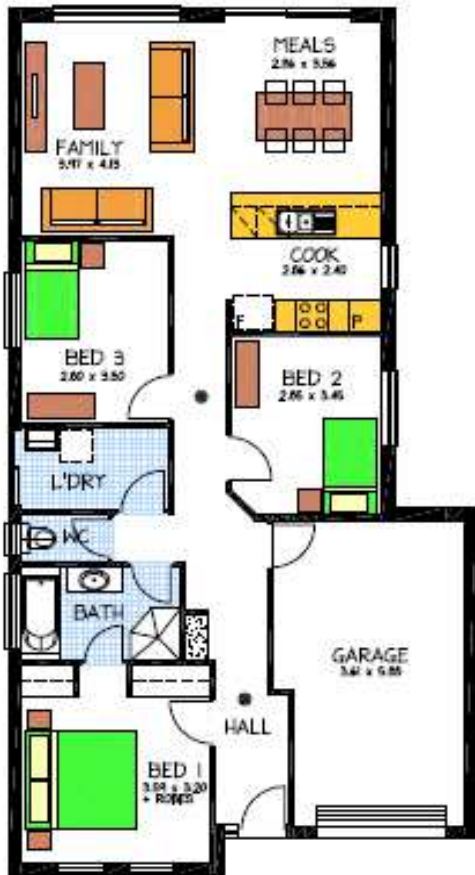
. Ideal for the Entertainer or just kick back and enjoy life!!

Be quick at this Price !!

**PACKAGE FROM: \$232,714**

**HOME: \$136,214 LAND: \$96,500**

Disclaimer: All care has been taken in the preparation of this material. No responsibility is taken for any errors or omissions. Details are subject to change without notification. Images for illustration purposes only. E&EO.



FOR THIS OFFER CALL

**JAMES 0420 677 339**

*Because trust is a must*

[www.rossdalehomes.com.au](http://www.rossdalehomes.com.au)