

House & Land Package

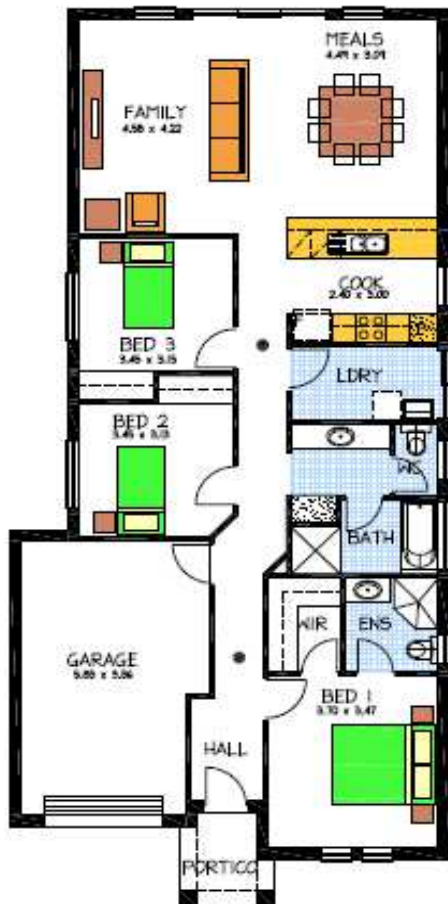


THE MARDEN

Allotments 2, 3, 4, 20, 21, 25, 26, 31
Rosewood Grove Elizabeth North

This package includes:

- 3 Bedrooms all with robes
- Ensuite to Master bedroom
- Spacious meals & family area
- Galley Kitchen with ample cupboards
- Stainless Steel Appliances
- Overhead cupboards Excellent fixtures & fittings throughout
- Excellent fixtures & fittings throughout
- Single carport with roller door
- Rendered front façade
- Insulation to walls & ceilings
- Generous Footings allowance
- Ideal for the Entertainer or just kick back and enjoy life!!



PACKAGE FROM: \$222,820

HOME: \$143,820 LAND: \$79,000

Disclaimer: All care has been taken in the preparation of this material. No responsibility is taken for any errors or omissions. Details are subject to change without notification. Images for illustration purposes only. E&EO.

FOR THIS OFFER CALL

JULIE 0409 677 794

Because trust is a must

www.rossdalehomes.com.au