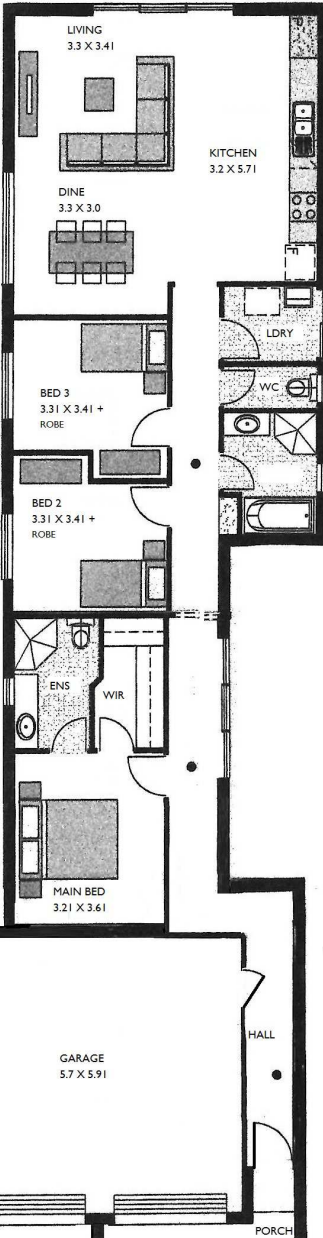


House & Land Package



Disclaimer: All care has been taken in the preparation of this material. No responsibility is taken for any errors or omissions. Details are subject to change without notification. Images for illustration purposes only. E&EO.



10 Third Avenue, SEATON

SOMERTON TERRACE

\$507,003

3 2 2

FRONT: 9.5M DEPTH: 37M
LAND: 426sqm HOUSE:

This package includes:

- 2.7m ceiling
- Robes to Bed 2 & 3
- RC Air Conditioning allowance
- Soft close hinges and draws
- Overhead cupboards to Kitchen
- Linen and Laundry cupboards
- Double Garage
- Timber look panel lift door
- Garage remote controls and operators
- High 2340mm x 1200mm Front door
- Room for an Alfresco on side
- Ensuite & 2nd Bath
- Dishwasher provision
- Quality Westinghouse appliances
- Instantaneous Gas hot water
- Rendered front portico
- R4.0 insulation in ceiling
- R2.0 insulation in external walls
- Colourbond Roof, Fascias & gutters
- Termimesh termite treatment
- All aluminium windows with fly screens and locks.
- Generous footings allowance with all excess spoil removed from site.
- Fixed Price CONTRACT no VARIATIONS to surprise.
- Any unforeseen extra costs at ROSSDALE'S cost GUARENTEED.

SUBJECT TO COUNCIL APPROVAL

PACKAGE FROM: \$507,003

HOME: \$208,003 LAND: \$299,000

FOR THIS OFFER CALL

GUY 0411 176 020

Because trust is a must

www.rossdalehomes.com.au