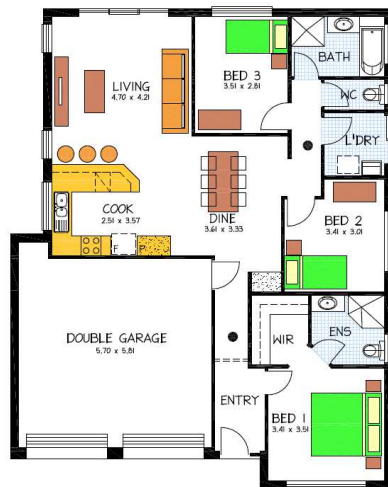


House & Land Package



IMAGE FOR ILLUSTRATION PURPOSES



15 Eagle Court, Semaphore Park

This package includes:

- Cleverly designed home with strong architectural features
- Option of plan designs available - ask Guy
- 3 Bedroom and large living area, Incl 2 bathrooms
- Full Gourmet Kitchen and Pantry
- Double Garage
- Bed 1 with WIR and Ensuite
- House Size 153 m2 and Land Size 25.5 x 21.5m
- Land Size 526.75m2
- ASK US ABOUT A DESIGN MODIFICATION
- ADJACENT COMMUNITY PARK
- NO NEIGHBOURS

PACKAGE FROM: \$499,000

HOME: \$149,000 LAND: \$350,000

Please ask for all details to Real Estate listing from Guy Henderson Rossdale Homes Listing Agent Callan Eames Harris Real Estate

ROSSDALE HOMES OFFER - "FULL FIXED PRICING" for that higher level of security.

Disclaimer: All care has been taken in the preparation of this material. No responsibility is taken for any errors or omissions. Details are subject to change without notification. Images for illustration purposes only. E&EO.

FOR THIS OFFER CALL

GUY HENDERSON 0411 176 020
GUY@ROSSDALEHOMES.COM.AU

Because trust is a must

www.rossdalehomes.com.au