

# House & Land Package



## THE CALAIS

Lot 312 Emerald Circuit Virginia Grove

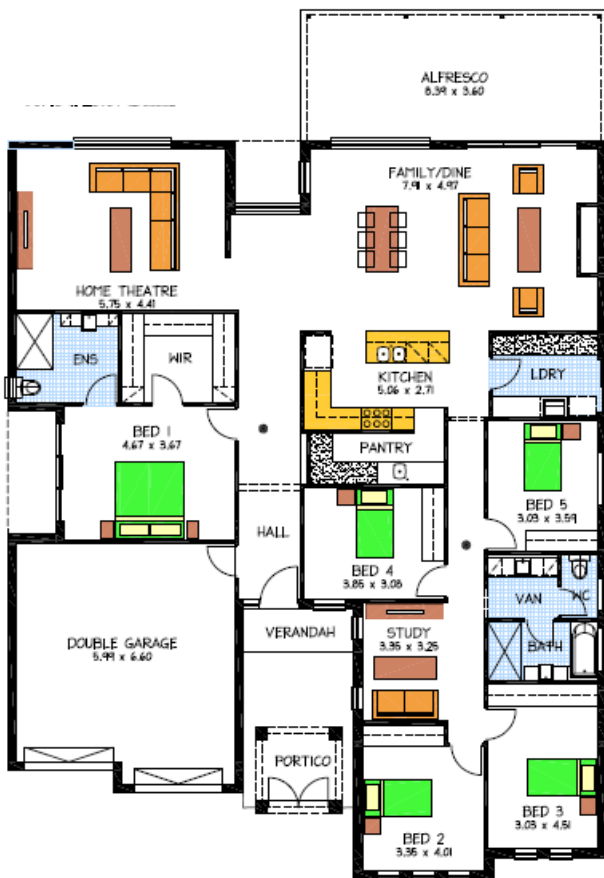
This package includes:

- Sovereign Specification
- As displayed front façade including render and freestanding portico, bright n lite mortar
- 5 spacious bedrooms
- Study
- Master bedroom generous walk-in robe and ensuite
- Built-in sliding robes to Bed 2, 3, 4, & 5
- Premium sanitary ware and bathroom accessories
- Stunning open plan living with 2.7m high ceiling
- Walk-In Butlers Pantry
- Stainless steel oven/hot plates/rangehood
- Alfresco under main roof
- Double garage with remote, overhead panel lift doors
- Above standard generous footing allowance
- NBN package included

**PACKAGE FROM: \$484,400**

**HOME: \$289,900 LAND: \$194,500**

Disclaimer: All care has been taken in the preparation of this material. No responsibility is taken for any errors or omissions. Details are subject to change without notification. Images for illustration purposes only. E&FO



FOR THIS OFFER CALL

**JAMES 0420 677 339**

**JULIE 0409 677 794**

*Because trust is a must*

[www.rossdalehomes.com.au](http://www.rossdalehomes.com.au)