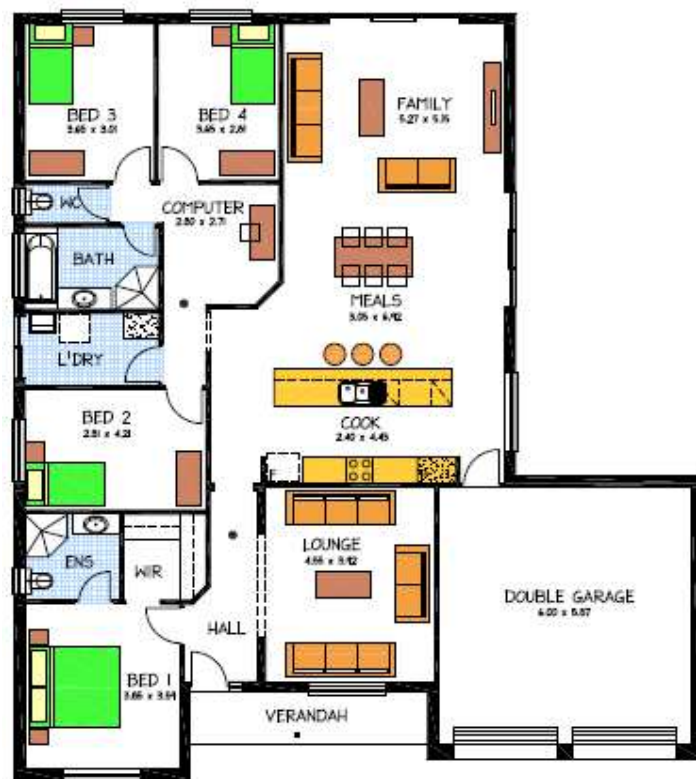


# House & Land Package



## THE VERDUN

Allotment 37 Onkaparinga Rise



### This package includes:

- Rosssdale Homes 'Verdun' design built to Select specification
- 4 Bedrooms + Computer/Study area
- 2 Bathrooms
- 2 Separate living areas
- Healthy footings allowance with all excess soil removed from site
- Split Level to home as required
- Front elevation to be rendered and painted allows for 2 colors
- Good sized Double garage with automatic roller doors
- All services are included along with NBN ready
- All cabinetry is included with overhead cupboards to kitchen, built in robes to bedrooms 2, 3 & 4, all laundry & linen as well
- Quality Westinghouse appliances including retracta range-hood & instantaneous hot water system
- Ceiling, external and internal wall insulation
- 2500 litre rain water tank with rain bank

### Extra options available for this package are:

Flooring, air-conditioning, storm-water disposal, paths, driveway, fencing, rear landscaping, pergola etc.

Disclaimer: All care has been taken in the preparation of this material. No responsibility is taken for any errors or omissions. Details are subject to change without notification. Images for illustration purposes only. E&EO.

**PACKAGE FROM: \$478,400**

**HOME: \$251,500 LAND: \$226,900**

FOR THIS OFFER CALL

**BRAD 0421 940 398**

*Because trust is a must*

[www.rossdalehomes.com.au](http://www.rossdalehomes.com.au)