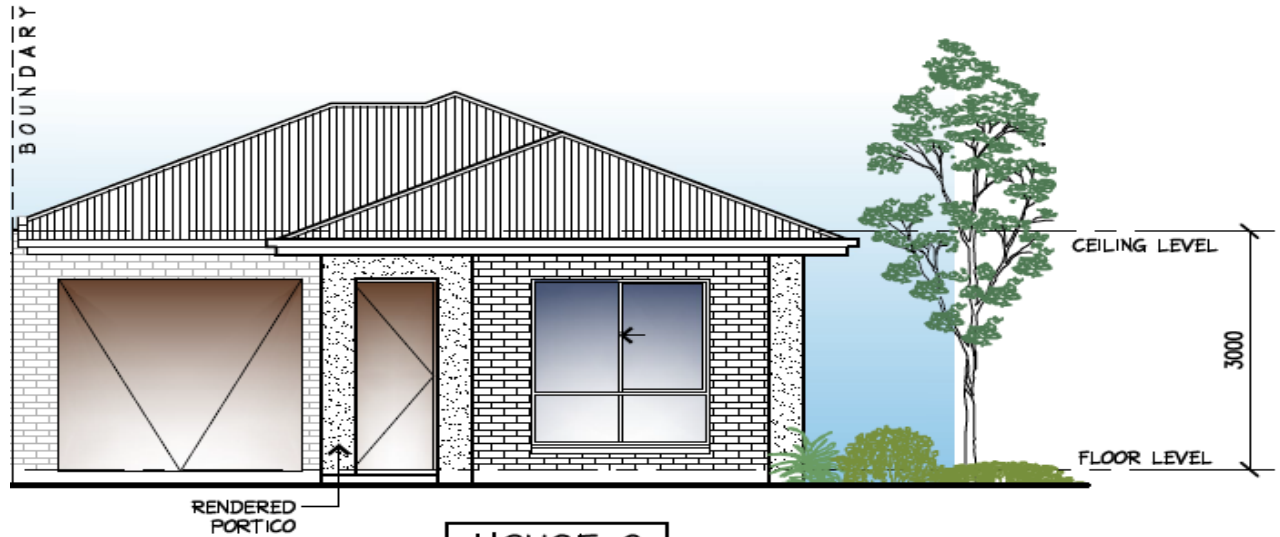


# House & Land Package



## This package includes:

- 3 bedroom home with single garage, with 2 separate living areas and Alfresco to rear
- Rendered Portico to front elevation and panel lift door to garage with remote controls
- 2700mm high ceilings & Colorbond roof
- WIR to Bed 1, Robes to bedrooms 2 & 3
- Stainless steel kitchen appliances and overhead cupboards
- Mixer tapware throughout
- Air-conditioning
- Floor Coverings to bedrooms and living areas
- Instantaneous gas HWS
- R4.0 ceiling insulation & R2.0 external wall insulation
- NBN package & Service runs allowance
- Footings allowance with all excess soil removed (subject to final engineering report)
- Call today for more options/details

**PACKAGE FROM: \$498,000**

Disclaimer: All care has been taken in the preparation of this material. No responsibility is taken for any errors or omissions. Details are subject to change without notification. Images for illustration purposes only. E&EO.

FOR THIS OFFER CALL

**SAGAR W. 0430 466 001**

*Because trust is a must*

[www.rossdalehomes.com.au](http://www.rossdalehomes.com.au)