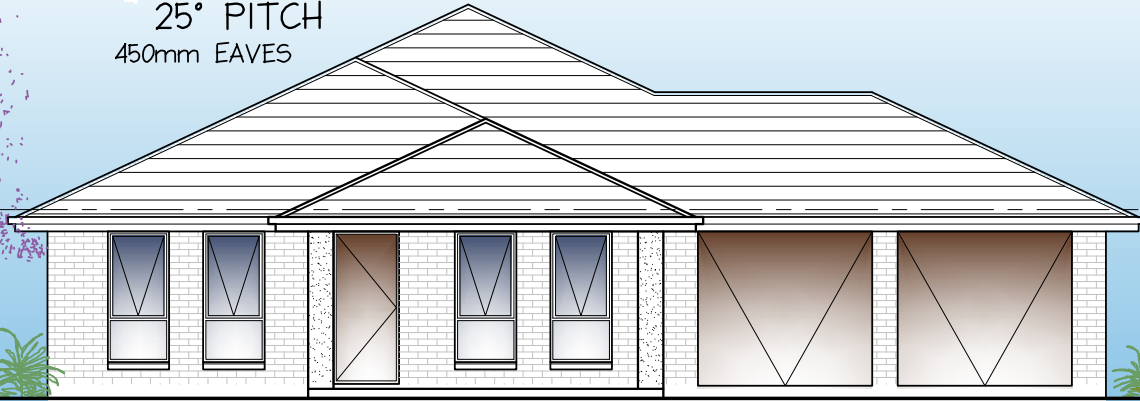


# House & Land Package

25° PITCH  
450mm EAVES



## FRONT ELEVATION

- TO BE FACE BRICK
- RENDERED BRICK PIERS TO PORTICO

Address: Lots 1501, 1502 & 1503  
Castleton street, Virginia

Buy with security of absolute **FIXED**  
price Contract.

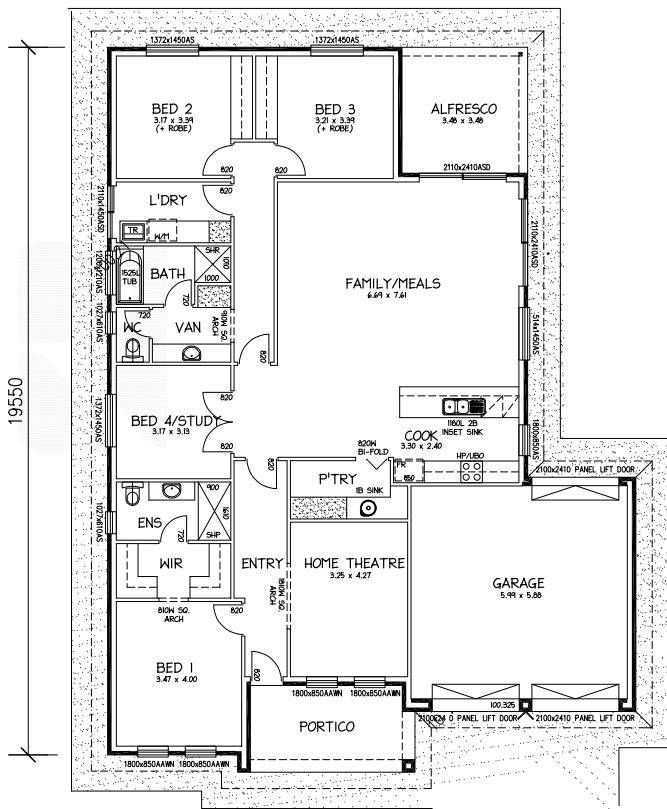
## This package includes:

- Generous footings allowance with wind speed and other encumbrance requirements
- Rossdale Homes Sovereign spec. with upgraded bathroom fittings, doors etc.
- WIR and Robes in bedrooms 2, 3 & 4
- Walk In pantry with shelving and sink
- Pot drawers in kitchen
- Insulation and Cabinetry Included throughout as per plan
- NBN package with USB points etc.
- Westinghouse appliances
- Front façade as per sketch with render to piers and awning windows
- 2.7m high ceilings
- Overhead cupboards in kitchen
- Turnkey options available with Fixed price
- Call today for more details

Land: \$190,000 (Lot 1503)

House: 205,699

Package from: \$395,699



Disclaimer: All care has been taken in the preparation of this material. No responsibility is taken for any errors or omissions. Details are subject to change without notification. Images for illustration purposes only. E&EO.

FOR THIS OFFER CALL

SAGAR 0430 466 001

Because trust is a must

www.rosdalehomes.com.au