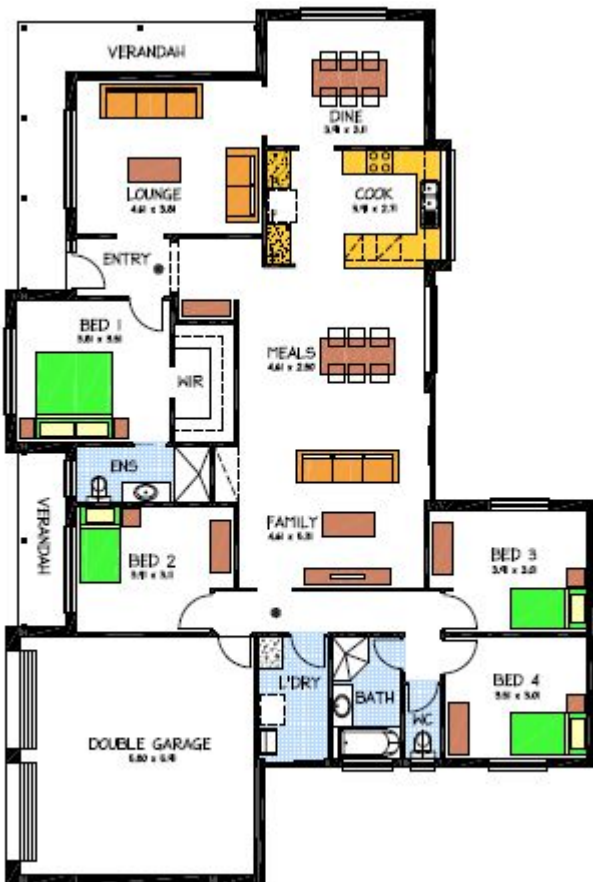


# House & Land Package



## 10 Greenville Close Aberfoyle Park

*Country Lifestyle close to amenities*

### This package includes:

- 979m2 of land in highly sought after location
- Rossdale Homes WILLUNGA design built to Select Specifications
- Overhead cupboards to kitchen with Westinghouse retracta rangehood
- Robes to all bedrooms and WIR to main Bedroom
- Ducted air conditioner
- Insulation to external walls and ceiling in living areas
- NBN connection provision
- 5400l Rain water tank and connection
- Generous footings allowance with all excess soil removed from site
- Basic BAL provision but subject to CFS referral
- 100% Absolute Fixed Price Contract

More options available, call today to find out more

**PACKAGE FROM: \$589,000**

**LAND FROM \$339,000 HOME \$250,000**

Disclaimer: All care has been taken in the preparation of this material. No responsibility is taken for any errors or omissions. Details are subject to change without notification. Images for illustration purposes only. E&EO.

FOR THIS OFFER CALL

**DAVE: 04 5050 2571**

*Because trust is a must*

[www.rossdalehomes.com.au](http://www.rossdalehomes.com.au)