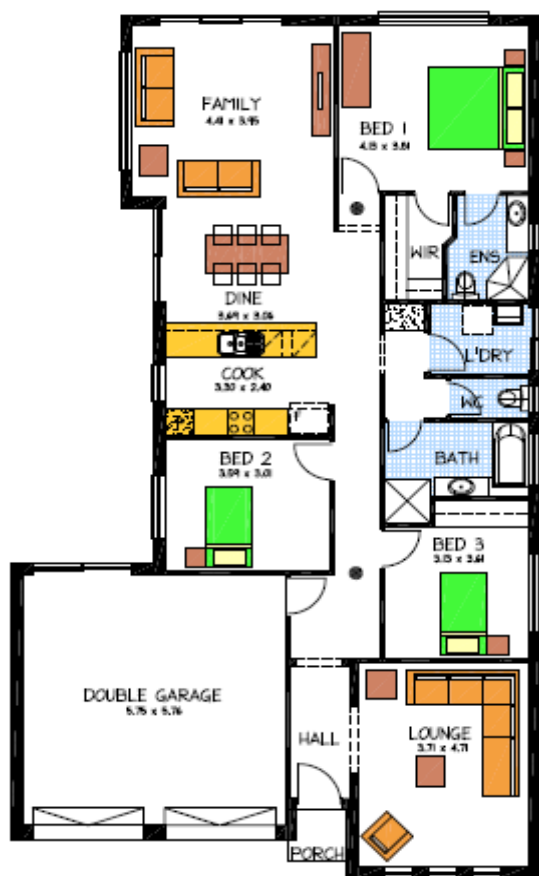


House & Land Package



THE KYTON-

LOT 194 LEWIS DRIVE- BURNLEA NORTH
BLAKES CROSSING



- 2700 ceiling height
- Sovereign specifications to home
- Rendered and painted front façade as Illustrated
- Stone veneered pillar as Illustrated
- Above kitchen bench cupboards/ rangehood and dishwasher
- Stainless steel appliances
- NBN package Included
- Carpets to lounge and all bedrooms
- Tiled floors to family/dining/kitchen/walkways/ hall
- generous extra footings allowance
- 1-meter concrete boundary and driveways

PACKAGE FROM: **\$370,458**

HOME: **\$208,458** LAND: **\$162,000**

Disclaimer: All care has been taken in the preparation of this material. No responsibility is taken for any errors or omissions. Details are subject to change without notification. Images for illustration purposes only. E&EO.

FOR THIS OFFER CALL
PETER KELLY

Because trust is a must
www.rossdalehomes.com.au