

House & Land Package

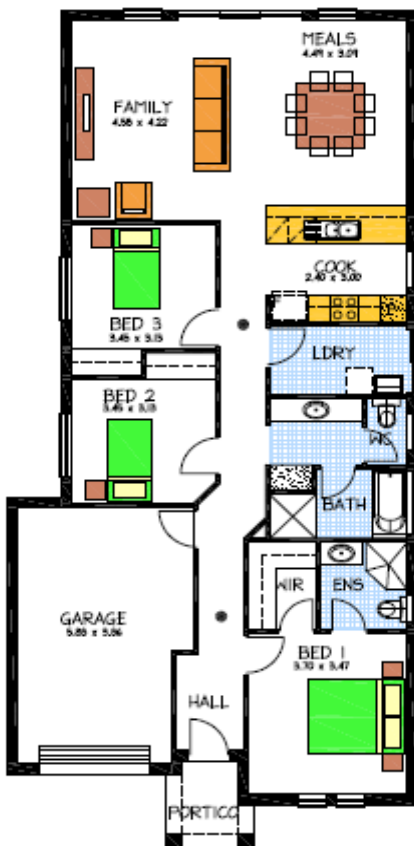


THE MARDEN

May Terrace **Brooklyn Park**

This package includes:

- Reverse cycle ducted airconditioning
- Rendered Façade
- Remote controlled panel lift door to garage
- NBN connection pack
- Stormwater connected
- Siteworks allowance
- Land size 533m² with 10.65m frontage opposite parklands



PACKAGE FROM: **\$680,000**

HOME: **\$180,000** LAND: **\$500,000**

Disclaimer: All care has been taken in the preparation of this material. No responsibility is taken for any errors or omissions. Details are subject to change without notification. Images for illustration purposes only. E&EO.

FOR THIS OFFER CALL

GEOFF GREENOW 0439 262888

Because trust is a must

www.rossdalehomes.com.au