

House & Land Package

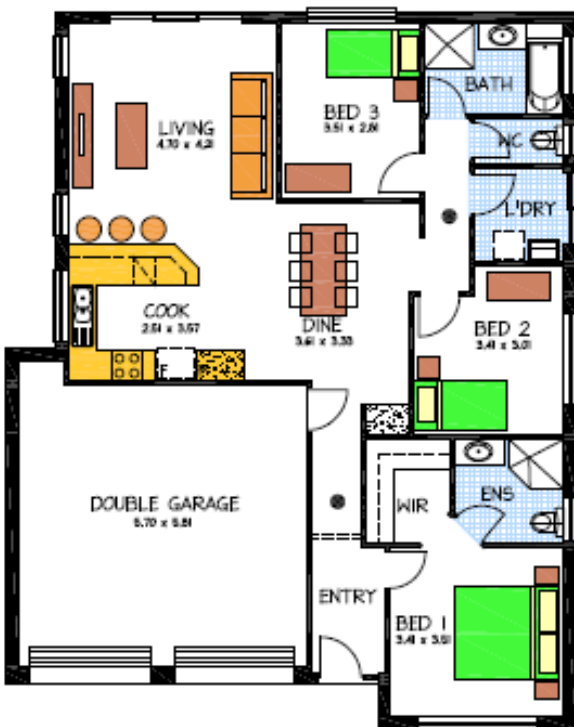


THE BOLERO

Address: Lt 165 Belanger Ct Blakeview

This package includes:

- Rendered-Painted front façade, Tiled roof & 1 wide remote-controlled panel door to garage.
- 2.7m high ceiling.
- 25-degree roof pitch.
- Allowance for above standard footings.
- Stainless steel Westinghouse appliances.
- Overhead cupboards in kitchen.
- Soft close drawers throughout.
- Options available to change the floor plan and front façade.



PACKAGE FROM: \$351,590

HOME: \$169,590 LAND: \$182,000

Disclaimer: All care has been taken in the preparation of this material. No responsibility is taken for any errors or omissions. Details are subject to change without notification. Images for illustration purposes only. E&EO.

FOR THIS OFFER CALL

SAGAR 0430 466 001

Because trust is a must

www.rossdalehomes.com.au