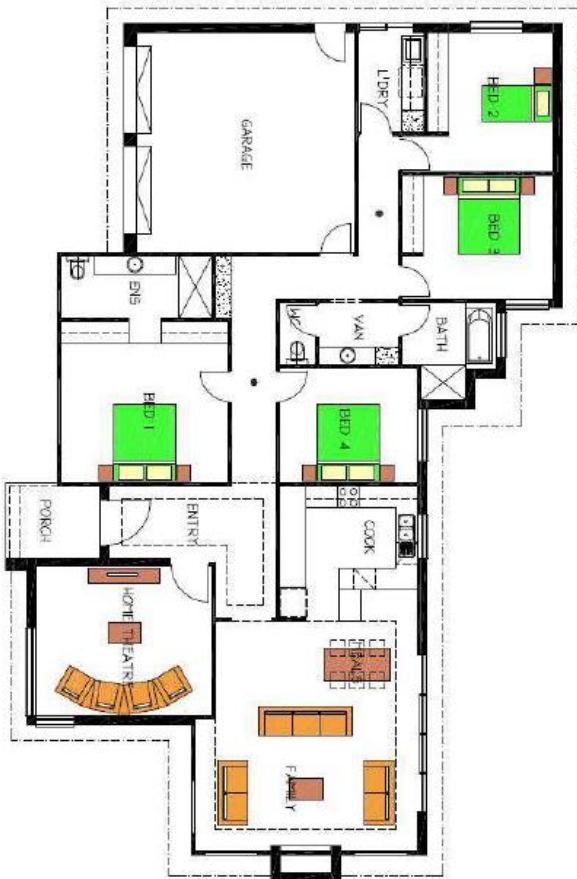


House & Land Package



The Flaxley

Lot 40 Langdon Ave, Clarence Gdns

This package includes:

• H&L PACKAGE

- Sovereign Specification
- 2.7 high metre ceilings
- NBN Included
- Front elevation render
- Healthy allowance per footings
- Panel Lift doors Included
- Boutique Commercial Windows to front Included
- Insulation to External Walls & to Roof
- Stainless Steel appliances package Included
- IXL Heatlamps Included to bathroom and ensuite
- Solid feature front door Included
- Clipsal switches to Ensuite
- Built In Robes Included to bedrooms
- Call me today to review the Specification and Inclusions

PACKAGE FROM: **\$983,631.00**

HOME: **\$258,631** LAND: **\$725,000**

Disclaimer: All care has been taken in the preparation of this material. No responsibility is taken for any errors or omissions. Details are subject to change without notification. Images for illustration purposes only. E&EO.

FOR THIS OFFER CALL

LEON: 0402 47 1977

Because trust is a must

www.rossdalehomes.com.au