

House & Land Package



THE CALAIS

Lot 27 Wagtail Way Clover Park Mt Barker

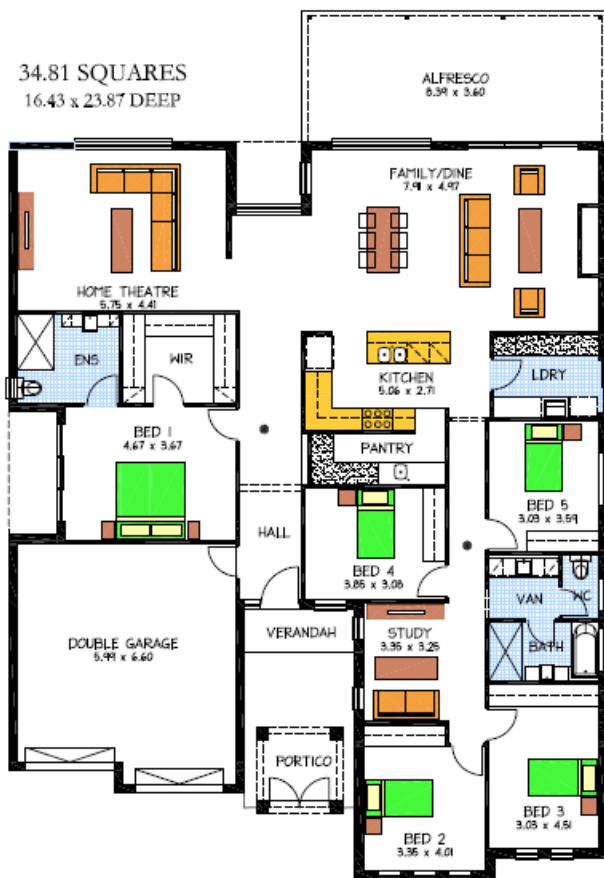
This package includes:

- Façade as image
 - Generous footing allowance (subject to final engineering report)
 - 2.7m high ceilings.
 - 25-degree roof pitch.
 - Stainless steel appliances.
 - Insulation & built in robes.
 - Linen storage cupboards.
 - Overhead cupboards and many more.
- Options available to change the floor plan and front façade, to suit your needs.
- Turnkey options also available

PACKAGE FROM: \$546,300

HOME: \$308,300 LAND: \$238,000

Disclaimer: All care has been taken in the preparation of this material. No responsibility is taken for any errors or omissions. Details are subject to change without notification. Images for illustration purposes only. E&EO.



FOR THIS OFFER CALL

KYM: 0436 481 640

Because trust is a must

www.rossdalehomes.com.au