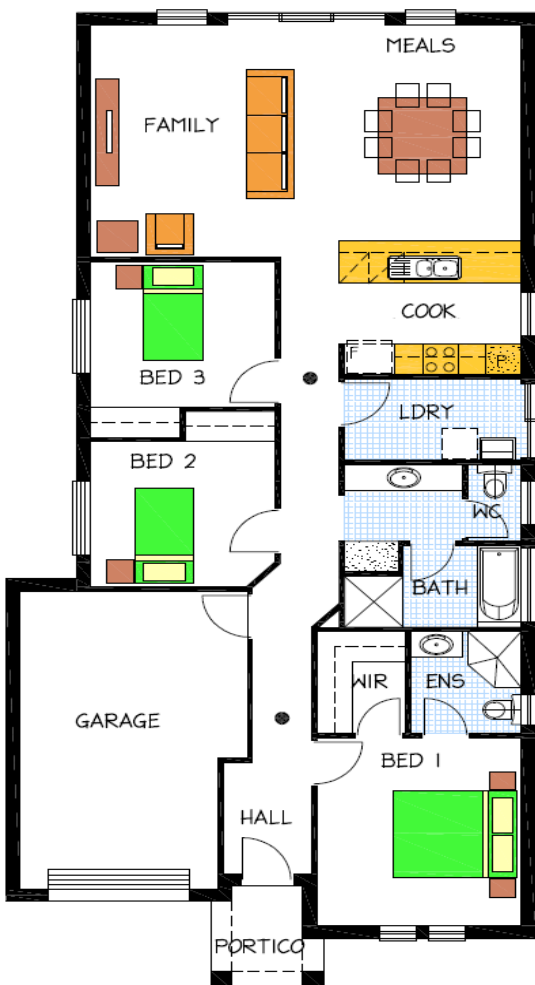


House & Land Package



Lots 33 & 34 of 1 Windsor Avenue Clearview

This package includes:

- Rendered front façade as per Image.
- 2.7m high ceilings
- Generous allowance for above standard footings & Boundary built.
- WIR in bed 1 and Robes in Bed 2 & 3
- Overhead cupboards
- Westinghouse Stainless steel kitchen appliances
- Soft close joinery throughout
- Remote roller door to garage
- 25-Degree roof pitch
- Land Size: 452m² 9.9m wide x 45.7m deep.
- Options available to change the floor plan and front elevation.
- Turnkey options & Fixed price contract available
- Give me a call for more details.

PACKAGE FROM: \$434,448

Disclaimer: All care has been taken in the preparation of this material. No responsibility is taken for any errors or omissions. Details are subject to change without notification. Images for illustration purposes only. E&EO.

FOR MORE INFO CONTACT
SAGAR 0430 466 001

Because trust is a must
www.rossdalehomes.com.au