

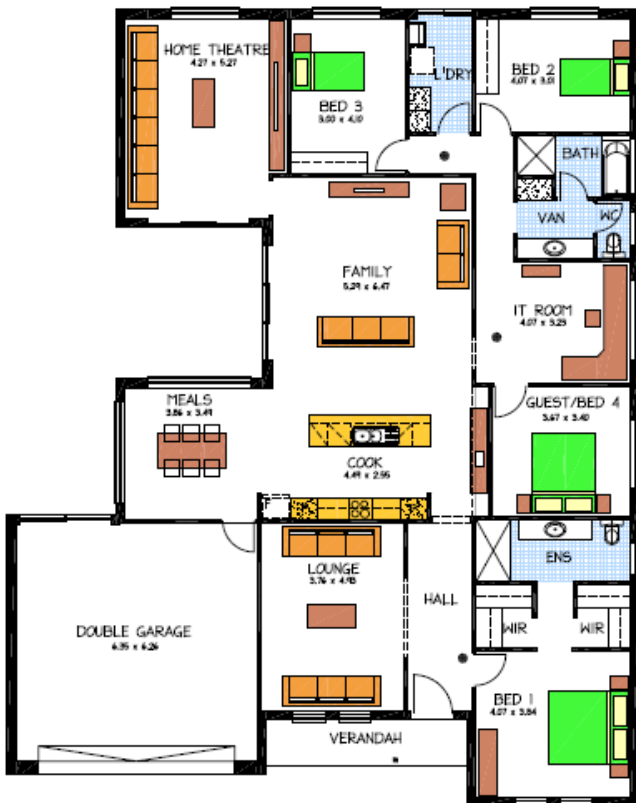
House & Land Package



THE WISTOW

Address: Lot 20 Blake close, Evanston
This package includes:

- Front Façade as shown in the image with verandah and render etc.
- Colorbond sectional overhead panel doors with remote controllers.
- 2.7m high ceilings.
- 25-degree roof pitch.
- Stainless steel appliances.
- Insulation & built in robes.
- Linen storage cupboards.
- Overhead cupboards and many more.
- Allowance for above standard footings/site works.
- Land: 919m2 and Total House size: 284.76m2 approx.
- To suit your needs, options available to change the floor plan and front façade.
- Turnkey options available.



PACKAGE FROM: \$467,255

HOME: \$222,305 LAND: \$244,950

Disclaimer: All care has been taken in the preparation of this material. No responsibility is taken for any errors or omissions. Details are subject to change without notification. Images for illustration purposes only. E&EO.

FOR THIS OFFER CALL

SAGAR : 0430 466 001

Because trust is a must

www.rossdalehomes.com.au