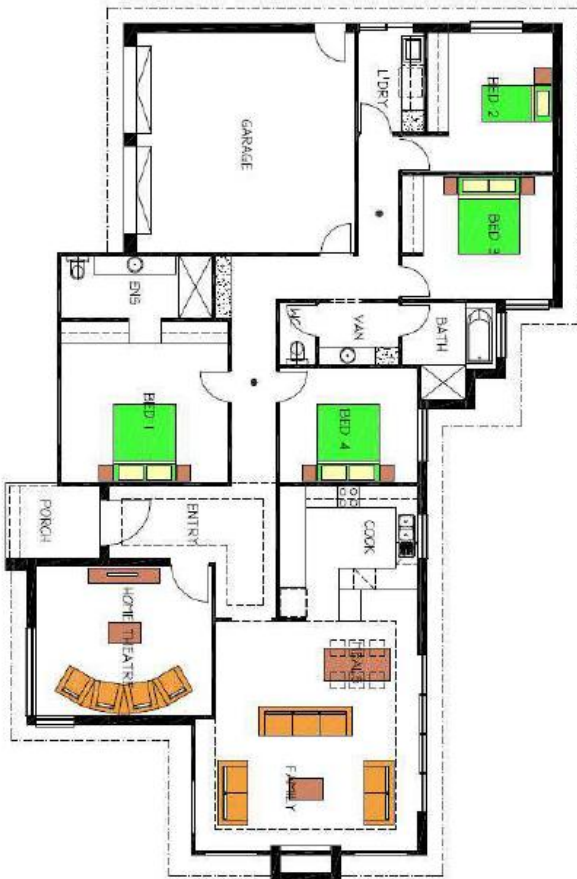


House & Land Package



The Flaxley

Lot 103 Luxton Ave, Gawler East

This package includes:

• FIXED PRICE H&L PACKAGE

- Sovereign Specification
- 2.7 high metre ceilings
- NBN Included
- Low Bushfire requirements Included
- Fixed price footings
- Panel Lift doors Included
- Boutique Commercial Windows to front Included
- Insulation to Internal, External Walls & to Roof
- 900 wide Stainless Steel appliances package Included
- IXL Heatlamps Included to bathroom and ensuite
- 2340 high x 1200 wide Pivot door Included
- Clipsal Slimline switches to Ensuite
- Built In Robes Included to bedrooms
- Call me today to review the Specification and Inclusions

PACKAGE FROM: **\$512,947.00**

HOME: **\$287,947** LAND: **\$225,000**

Disclaimer: All care has been taken in the preparation of this material. No responsibility is taken for any errors or omissions. Details are subject to change without notification. Images for illustration purposes only. E&EO.

FOR THIS OFFER CALL

LEON: 0402 47 1977

Because trust is a must

www.rossdalehomes.com.au