

House & Land Package



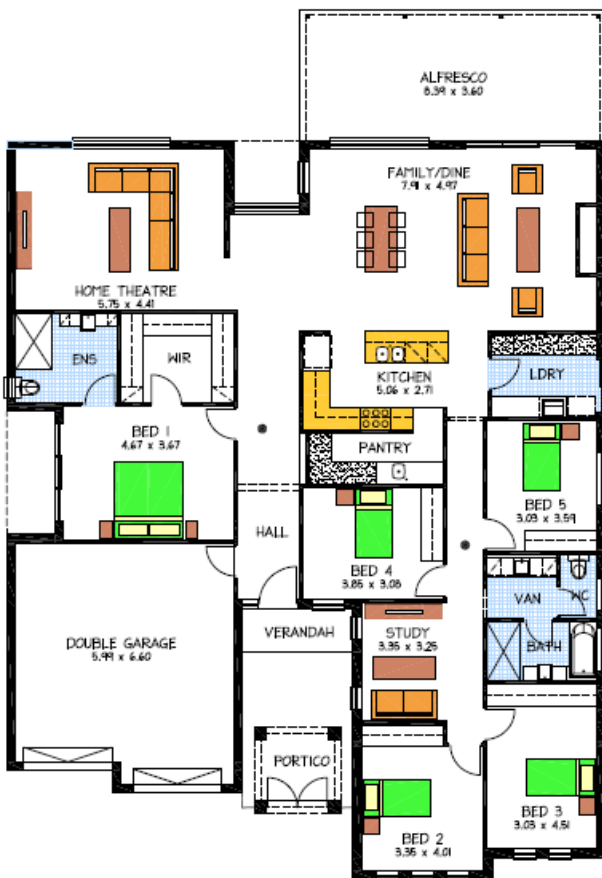
THE CALAIS

**Lot 9 Luxton Avenue, Gawler East -
Springwood**

This package includes:

- As displayed rendered front façade & panels doors to garage.
- Rossdale Homes Calais design built to Sovereign Specifications including Double Garage & Alfresco Area
- 5 well sized bedrooms along with IT/Study area
- Home Theatre room
- Master bedroom with Ensuite and Large WIR, Built in Robes to all other bedrooms
- Butler's pantry to Kitchen which overlooks the main open living area and Alfresco area
- Home is fully insulated including internal walls
- 608m² of land in Highfield release of Springwood
- Healthy Footings allowance with all excess soil removed from site
- 100% Absolute Fixed Price Contract for extra peace of mind
- Call today for more details.

More options available to make this a 'turn key' package
Call today to find out more about this house and land package



Disclaimer: All care has been taken in the preparation of this material. No responsibility is taken for any errors or omissions. Details are subject to change without notification. Images for illustration purposes only. E&EO.

PACKAGE FROM: \$508,390

FOR THIS OFFER CALL

SAGAR 0430 466 001

Because trust is a must

www.rossdalehomes.com.au