

Sub Divide and Develop Opportunity



Ingle Farm- 8 Vitana Avenue

House & Land Package

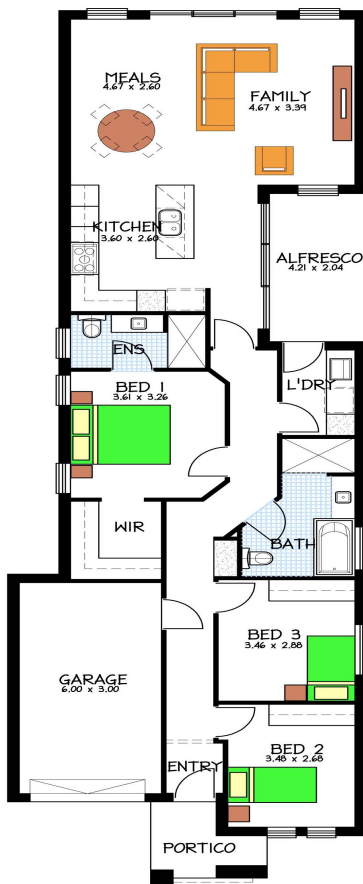


Potential to Build these homes on this block

This package for each home includes:

- Fully Rendered and painted front façade as per Image.
- Reverse cycle air conditioning.
- Floor tiling to Portico, entry, passage, cook, meals, family & alfresco.
- Carpet to bed 1, WIR, bed 2 & bed 3.
- Rossdale Homes Sovereign spec. package.
- \$20,000 Allowance for above standard footings.
- Three large bedrooms
- Overhead cupboards
- Stainless steel appliances
- Soft close joinery throughout
- Remote panel door to garage
- 25-Degree roof pitch
- Fully detached dwelling

Options available to change the floor plan and front elevation



HOUSE PRICE \$207,000 EACH

LAND FROM \$350,000 FOR THE 660M2 BLOCK

SUB DIVISION COSTS APPROXIMATLY \$35,000

FOR THIS OFFER CALL

DAVE GODDARD 04 5050 2571

Because trust is a must

www.rossdalehomes.com.au

Disclaimer: All care has been taken in the preparation of this material. No responsibility is taken for any errors or omissions. Details are subject to change without notification. Images for illustration purposes only. E&EO.