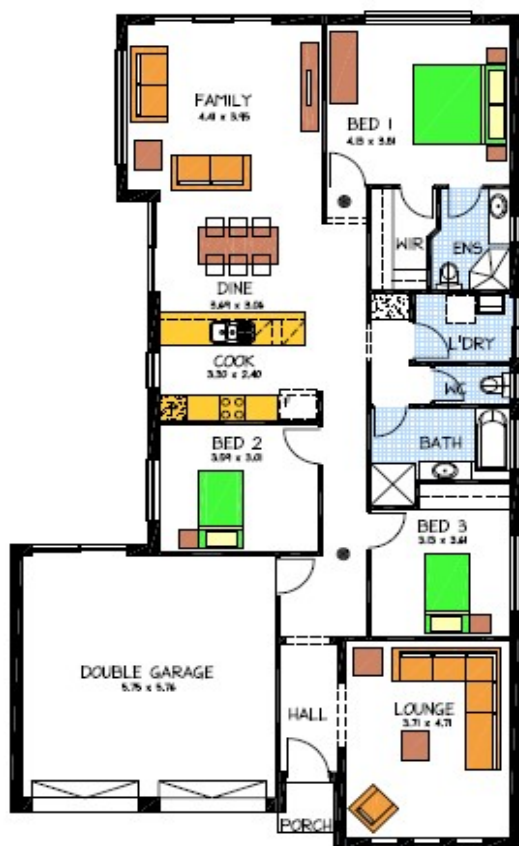


House & Land Package



THE KYTON

To suit allotments 15,16,17, 26 & 27 Burnside Drive,
Onkaparinga Hills (Onkaparinga Rise Development)

This Package Includes:

- Rossdale Homes Kyton 147 design built to Select Specifications
- Front elevation is rendered and painted incl. 2 colours along with feature Rusitc Bookleaf Stack Stone to brick pier
- Double Garage with automatic roller doors and internal access
- All services are included along with NBN ready.
- All cabinetry is included with overhead cupboards to Kitchen, built in robe to Bedroom 3 and all Laundry and linen cupboards
- Quality Westinghouse appliances including retracta range-hood
- Instantaneous hot water system
- Ceiling, external and internal wall insulation is all taken care of
- All siteworks including above standard footings and excess soil removal is included
- 3,500 litre slimline rainwater tank plumbed to WC
- Absolute FIXED PRICE CONTRACT

PACKAGE FROM: \$369,750

HOME: \$186,250 LAND: \$183,500

Disclaimer: All care has been taken in the preparation of this material. No responsibility is taken for any errors or omissions. Details are subject to change without notification. Images for illustration purposes only. E&EO.

FOR THIS OFFER CALL

BRAD: 0421 940 398

Because trust is a must

www.rossdalehomes.com.au