

# House & Land Package



## CONDON DRIVE LIGHTSVIEW SA 5085

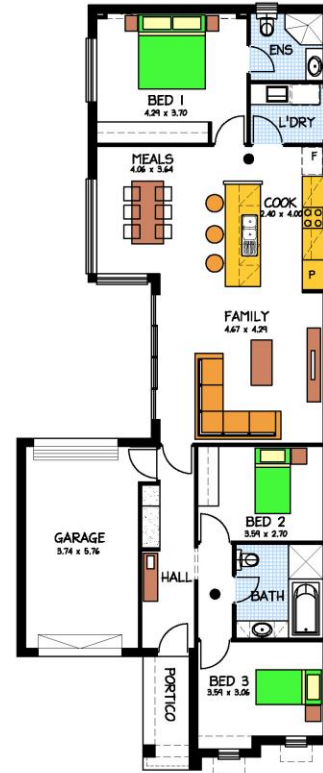
### ALLENBY VILLA - Blakes Crossing

Areas (m <sup>2</sup> )	
Living	122.619
Garage	22.164
Porch	4.389

Total 149.172

**16.05 SQUARES**

8.98 x 21.82 DEEP



### This package includes:

- Total site area is 275sqm with 10m frontage
- Allenby Villa Design to Rossdale's Sovereign Specification (total house area:149.2sqm)
- Smart design Including 3 bedrooms and 2 living areas
- 2.7m ceiling height to both floors
- Front loader garage and internal access
- WIR & Ensuite to master bedroom
- Instantaneous Hot Water System
- Optical cable network ready
- Westinghouse kitchen wares
- Standard footings allowance
- Fixed Price Quotation Including engineers footing report before signing contract
- 25 Year Structural Warranty
- Easy finance
- Show home is available for inspection
- Other designs available

### HOUSE & LAND PACKAGE

**FROM: \$443,479**

**Home: \$174,479 Land: \$269,000**

Images for illustration purposes only.

FOR THIS OFFER CALL

**CHEN XIE**

**0449 254 211**

*Because trust is a must*

[www.rossdalehomes.com.au](http://www.rossdalehomes.com.au)