



LOT 101 & 100 GIFFORD STREET SOUTH PLYMPTON House & Land Package From: \$544,850

This package includes:

House and Land opportunity available to build your Dream home with Rossdale Homes.

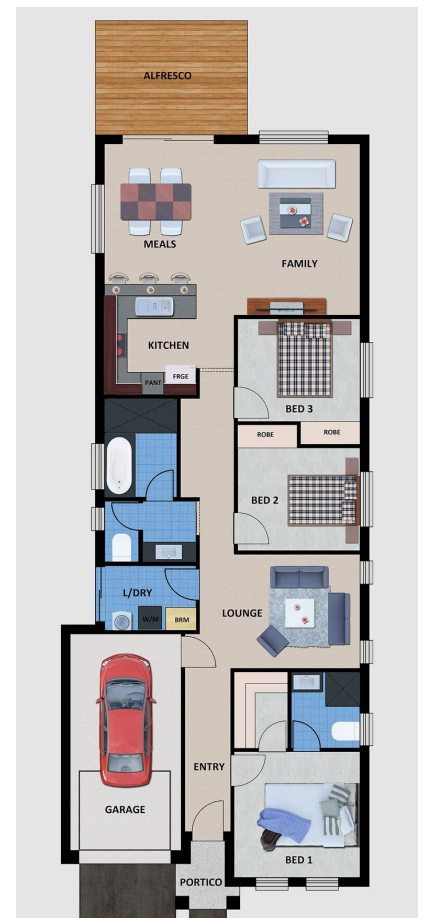
- ▶ 3 bedroom home with single garage, with 2 separate living areas and remote panel lift door
- ▶ Tiled alfresco to rear
- ▶ Façade as per elevation including render
- ▶ 2700mm high ceilings
- ▶ Colorbond roof
- ▶ Robes to bedrooms 2 & 3
- ▶ Stainless steel kitchen appliances and overhead cupboards
- ▶ Mixer tapware throughout
- ▶ Ducted reverse cycle air-conditioning
- ▶ Floor Coverings to bedrooms

- and living areas
- ▶ Instantaneous gas HWS
- ▶ R4.0 ceiling insulation & R2.0 external wall insulation
- ▶ TV antenna
- ▶ NBN package
- ▶ Rainwater tank
- ▶ Paths and driveway including termi-mesh barrier treatment
- ▶ Stormwater disposal
- ▶ Footings allowance with all excess soil removed (subject to final engineering report)

Land Size: 350m²

Frontage 9.45m x Depth 37m

Disclaimer: All care has been taken in the preparation of this material. No responsibility is taken for any errors or omissions. Details are subject to change without notification. Images for illustration purposes only. E&EO.



Call Michael Penney
0422 969 672
mpenney.rps@rossdalehomes.com.au

Call Brooke Parker
0422 049 619
bparker.rps@rossdalehomes.com.au