

# House & Land Package



## THE WINDSOR

**Address: Lot 3 of 79 Cungena Av.  
Park Holme**

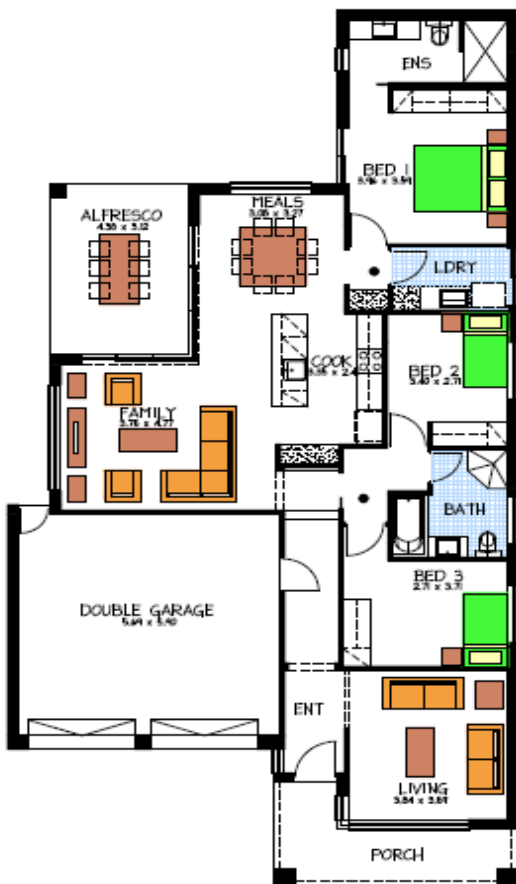
**This package includes:**

- Reverse cycle Air conditioning
- Carpet to rooms
- Eco floor strand woven bamboo flooring to living, entry, passages, family, meals & kitchen
- Another double garage plan available with Fixed price and partial council approval
- Sovereign spec. Inclusions
- Generous allowance for footings/site works
- Cabinetry Included throughout as per plan
- Westinghouse appliances
- Front façade as per photo with no render and roller doors
- Rossdale homes quality assurance
- FIXED price contract available
- Call today for more details

**PACKAGE FROM: \$557,765**

**HOME: \$217,765 LAND: \$340,000**

Disclaimer: All care has been taken in the preparation of this material. No responsibility is taken for any errors or omissions. Details are subject to change without notification. Images for illustration purposes only. E&EO.



FOR THIS OFFER CALL

**SAGAR 0430 466 001**

*Because trust is a must*

[www.rossdalehomes.com.au](http://www.rossdalehomes.com.au)