

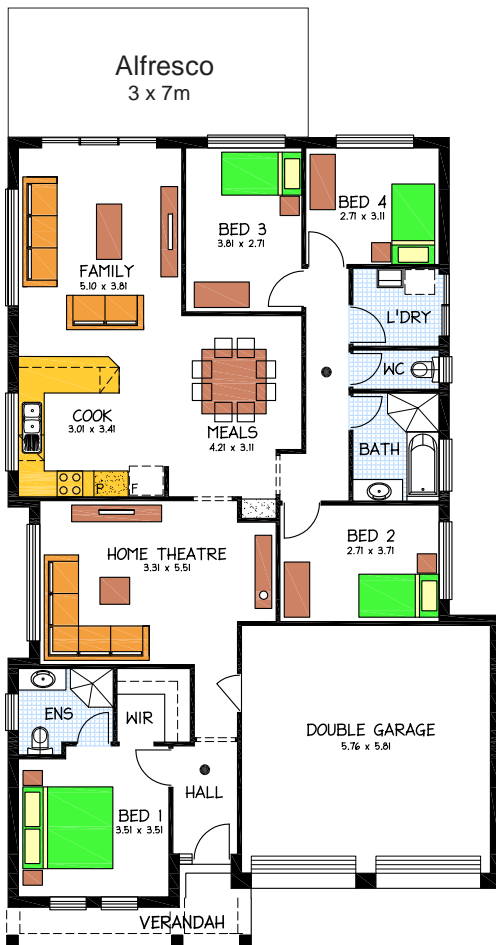
House & Land Package



Address: Lots 9 & 12 Coomurra rise,
Salisbury Heights, SA 5109

This package includes:

- Rossdale Homes Sovereign specification (upgraded)
- As per picture fully rendered front facade with panel lift remote controlled doors to garage
- Healthy allowance for above standard footings/site works, service runs, 33km/hr wind speed and Medium Bushfire requirements
- Total House footprint 211m² on 16.7m wide x 38.93m deep = 650m² blocks
- Reverse cycle Air con.
- Floor coverings throughout
- 4 Bedrooms with WIR to bed 1 & robes to rest
- 2.7m high ceilings
- Westinghouse stainless steel appliances
- Overhead cupboards in kitchen and soft close drawers throughout
- 100% Fixed Price contract
- Call today for more options/details



PACKAGE FROM: **\$545,220**

HOME: **\$227,220** LAND: **\$318,000**

Disclaimer: All care has been taken in the preparation of this material. No responsibility is taken for any errors or omissions. Details are subject to change without notification. Images for illustration purposes only. E&EO.

FOR THIS OFFER CALL

SAGAR W. 0430 466 001

Because trust is a must

www.rossdalehomes.com.au