

House & Land Package

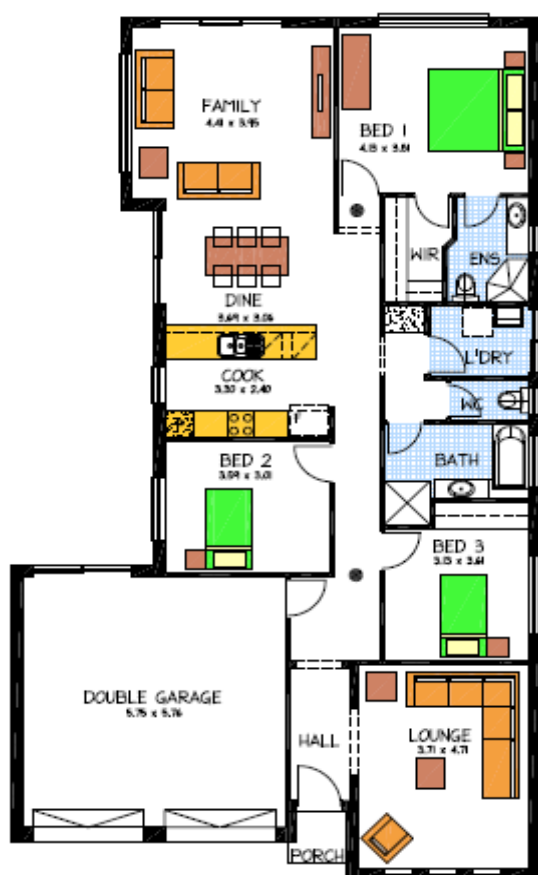


THE KYTON

Lot 91 Hendrie St, Morphettville

This package includes:

- Large three bedroom home
- 2700 ceilings throughout
- Separate second lounge room
- Ensuite and walk in robe to Bed 1
- Soft Close joinery
- Westinghouse Appliances
- Floor coverings throughout
- Stormwater connection
- NBN Connection
- Generous footings allowance
- Paving to driveway and perimeter path
- 500sq meter of land



PACKAGE FROM: **\$551,500**

HOME: **\$196,500** LAND: **\$355,000**

Disclaimer: All care has been taken in the preparation of this material. No responsibility is taken for any errors or omissions. Details are subject to change without notification. Images for illustration purposes only. E&EO.

FOR THIS OFFER CALL

TIFFANY: 0422 072 598

Because trust is a must

www.rossdalehomes.com.au