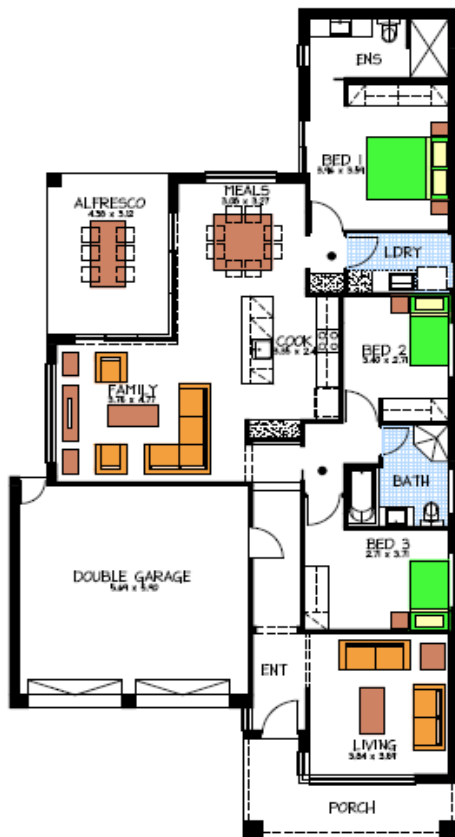


# House & Land Package



## LOT 15 VICTORIA ROAD MOUNT BARKER



- Rossdale Sovereign Specification
- Façade as shown, Includes 2.7m ceilings
- Stainless Steel Kitchen Appliances
- Septic to CED
- Stormwater disposal
- Medium Bushfire requirements
- Hume Panelled Doors with Lever Handles
- Mixer Tapware throughout
- Built In Robes to all Bedrooms

### HOUSE & LAND PACKAGE

FROM: **\$398,400**

Disclaimer: All care has been taken in the preparation of this material. No responsibility is taken for any errors or omissions. Details are subject to change without notification. Images for illustration purposes only. E&EO.

FOR THIS OFFER CALL

**ROB PHILLIPS: 0403 377 987**

*Because trust is a must*

[www.rossdalehomes.com.au](http://www.rossdalehomes.com.au)