

# House & Land Package



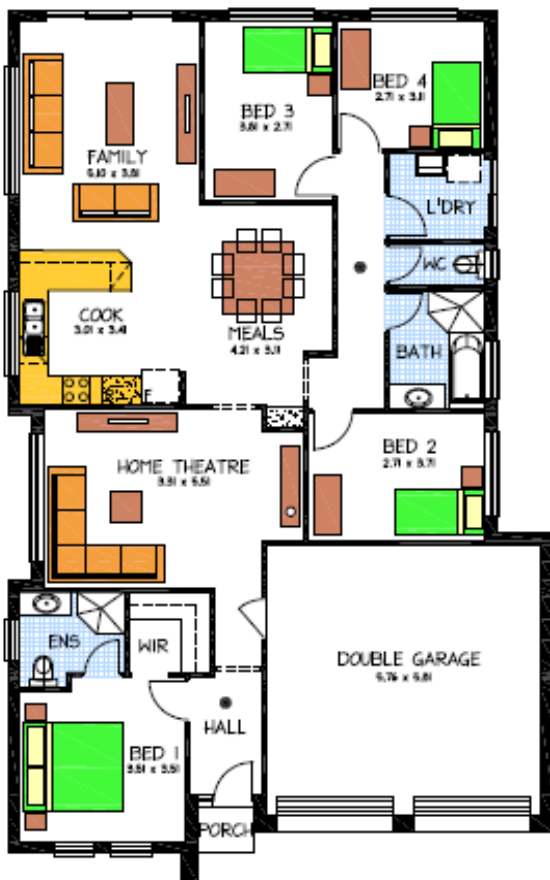
## THE ENVOY

- 4 Bedrooms, Ensuite and Bathroom
- 2 Living areas (Home Theatre)
- WIR and Robes to all Bedrooms
- 2.7 Ceilings, Double Garage
- NBN Package, 2 x 2400 Panel Lift Doors
- M Class Footings, R2 & R4 Insulation
- Reverse Cycle Air-Conditioning
- Floor coverings
- Driveway, paths, Stormwater system and rain water tank
- Package allows Individual design changes and materials, options for facade features, alfresco, pantry addition and upgraded appliances during selections

PACKAGE FROM: **\$517,000**

HOME: **\$222,000** LAND: **\$295,000**

Disclaimer: All care has been taken in the preparation of this material. No responsibility is taken for any errors or omissions. Details are subject to change without notification. Images for illustration purposes only. E&EO.



FOR THIS OFFER CALL

DAVE GODDARD 04 5050 2571

D.GODDARD@ROSSDALEHOMES.COM.AU

*Because trust is a must*

www.rossdalehomes.com.au