

# House & Land Package

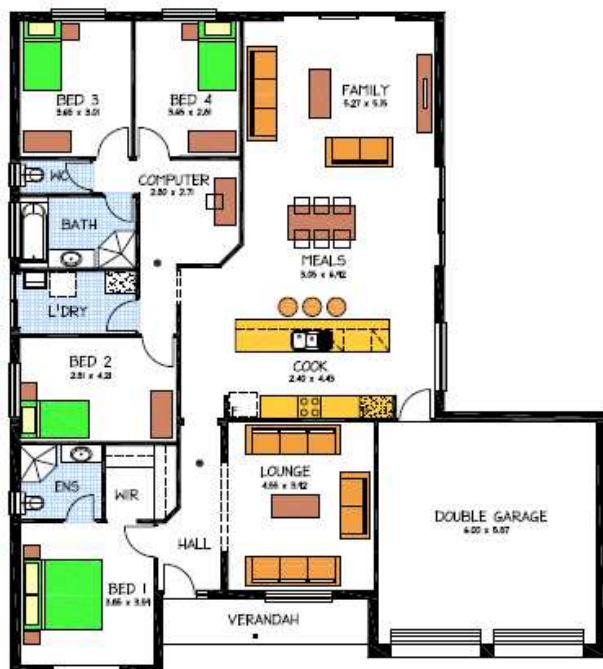


## THE VERDUN

Lot 37 Onkaparinga Rise

This package includes:

- Rossdale Homes Verdun split level design built to Select Specifications
- Front elevation is partially rendered and painted
- Double Garage with automatic roller doors and internal access
- All services are included along with NBN ready.
- All cabinetry is included with overhead cupboards to Kitchen, built in robes to Bedrooms 2, 3, 4 and broom cupboard to laundry
- Quality Westinghouse appliances including retracta range-hood
- Instantaneous hot water system
- Ceiling, external and internal wall insulation is all taken care of
- All siteworks including above standard footings and excess soil removal is included
- 2,500 litre slimline rainwater tank plumbed to WC



Disclaimer: All care has been taken in the preparation of this material. No responsibility is taken for any errors or omissions. Details are subject to change without notification. Images for illustration purposes only. E&EO.

PACKAGE FROM: **\$474,542**

HOME: **\$247,642** LAND: **\$226,900**

FOR THIS OFFER CALL

**BRAD 0421 940 398**

*Because trust is a must*

[www.rossdalehomes.com.au](http://www.rossdalehomes.com.au)