

House & Land Package



THE MARDEN

Allotment 97 Rosewood Avenue, Elizabeth North
(Rosewood Grove Development)

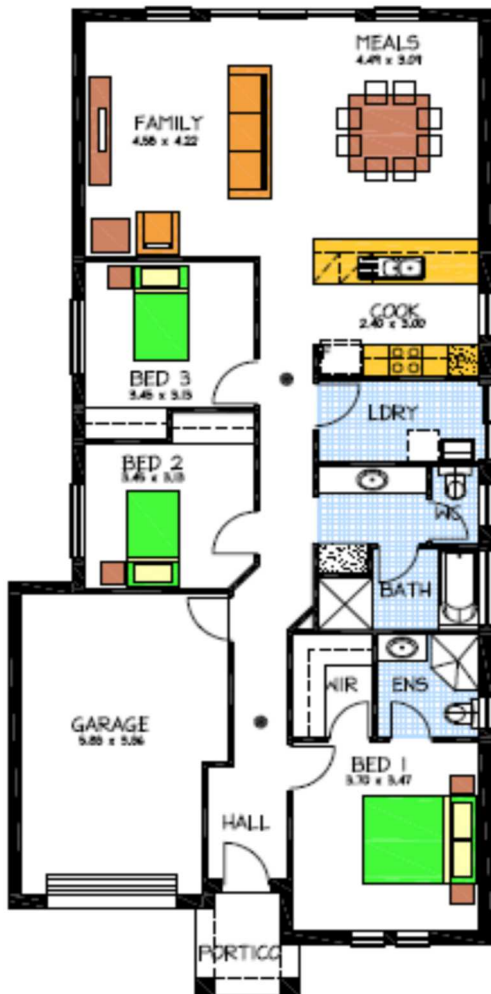
This package includes:

- 3 Bedrooms (WIR to Master)
- Modern Kitchen overlooking Spacious Family/Meals
- Overhead cupboards and Retractable Rangehood
- Separate Laundry
- Reverse cycle Split System
- Carpet and floor coverings throughout
- Remote control to roller door
- Rainwater Tank and Stormwater connected to Street
- Concrete Driveway and Perimeter Paths
- Termimesh Perimeter System
- Footings Allowance
- And much more

(Optional Portico Shown)

PACKAGE FROM: \$263,421

HOME: \$164,421 LAND: \$99,000



Disclaimer: All care has been taken in the preparation of this material. No responsibility is taken for any errors or omissions. Details are subject to change without notification. Images for

FOR THIS OFFER CALL

JAMES 0420-677-339

Because trust is a must

www.rossdalehomes.com.au

House & Land Package



Disclaimer: All care has been taken in the preparation of this material. No responsibility is taken for any errors or omissions. Details are subject to change without notification. Images for illustration purposes only. **THIS SITING IS NOT TO SCALE AND SHOULD BE USED AS A GUIDE ONLY.** E&EO.

FOR THIS OFFER CALL

JAMES 0420-677-339

Because trust is a must

www.rossdalehomes.com.au