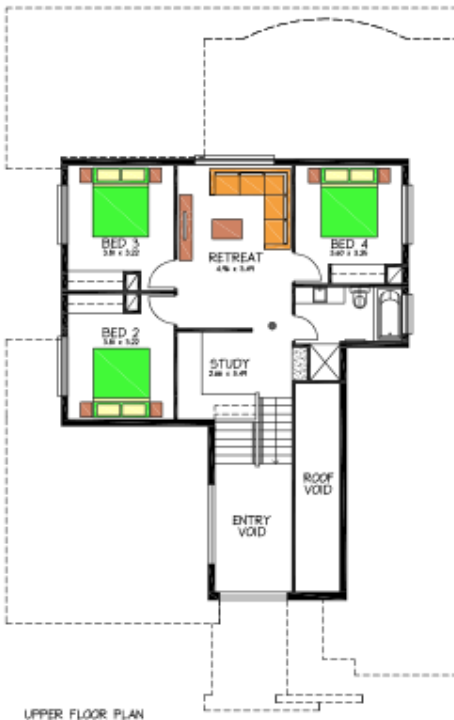


# House & Land Package



## THE BELLEVUE

Address: 9, 11 & 13 Liapis court,  
Rostrevor

This package includes:

- Healthy allowance for above standard footings/site works.
- Rendered & painted, entire lower level of house (excluding front blade wall adjacent to porch).
- As per picture Double brick blade wall adjacent to porch to be tiled (both sides)
- Aluminum framed with acrylic infill panel lift door to front of garage.
- 2340mm high Humes Linear HLR230 internal doors throughout.
- Floor to ceiling wall tiling to bathroom and ensuite.
- Floor tiling to porch, entry foyer, concrete steps leading downstairs, passage, family, meals, kitchen & alfresco.
- Carpet (category 2) to bed 1, WIR, home theatre, stairs leading upstairs, retreat, bed 2, bed 3 & bed 4.
- Rossdale Homes quality assurance.
- Absolute FIXED PRICE contract available.
- Call today for more details.

PACKAGE FROM: \$1,499,405

Disclaimer: All care has been taken in the preparation of this material. No responsibility is taken for any errors or omissions. Details are subject to change without notification. Images for illustration purposes only. E&EO.

FOR THIS OFFER CALL

**SAGAR 0430 466 001**

*Because trust is a must*

[www.rossdalehomes.com.au](http://www.rossdalehomes.com.au)