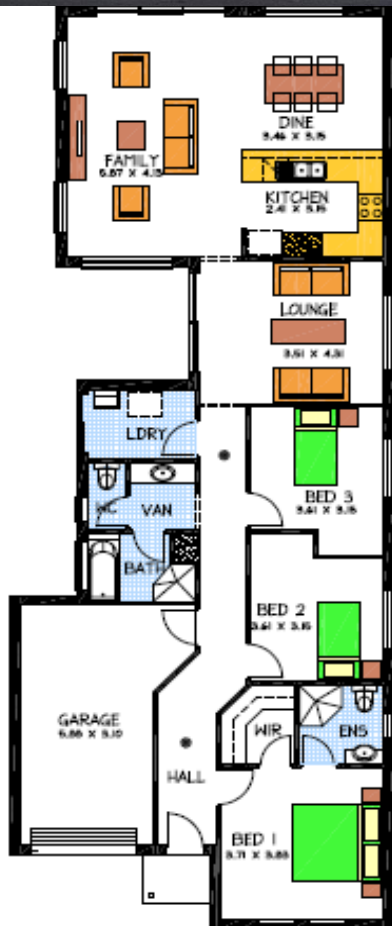


# House & Land Package



## THE ASHBOURNE

**1 block sold – 1 left** Address: Lot 741  
Chaliapin St. Rostrevor

This package includes:

- Rendered front façade as per picture.
- 2.7m high ceiling
- Generous allowance for above standard footings
- WIR to bed 1, robes to bed 2 & 3
- Westinghouse stainless steel appliances
- Land size approx. 9.15m wide x 32m deep = 293m<sup>2</sup>
- Softclose drawers throughout
- Alternate floor plans & front façades available
- Turnkey options available
- Absolute Fixed price contract
- Call today for more details

PACKAGE FROM: **\$499,512**

HOME: **\$179,512** LAND: **\$320,000**

Disclaimer: All care has been taken in the preparation of this material. No responsibility is taken for any errors or omissions. Details are subject to change without notification. Images for illustration purposes only. E&EO.

FOR THIS OFFER CALL

**SAGAR 0430 466 001**

*Because trust is a must*

[www.rossdalehomes.com.au](http://www.rossdalehomes.com.au)