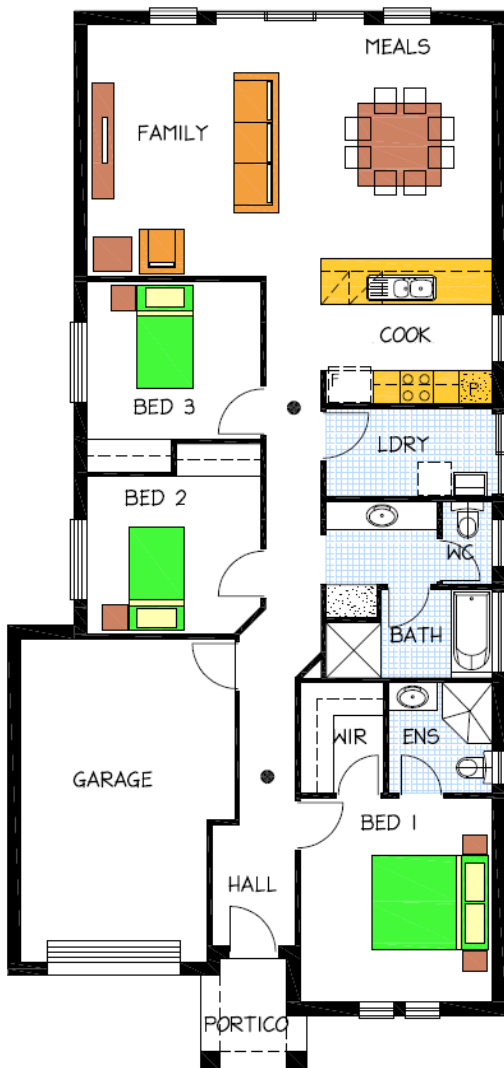


House & Land Package



Lot 34, 9 Iveleary Ave, Salisbury East



This package includes:

- 2.7m high ceilings throughout
- Open plan living
- Three large bedrooms
- Carpet and timber laminate floor coverings
- Rendered façade as per image
- Stormwater connection
- Concrete paving to driveway and perimeter of house
- Soft close joinery throughout
- Torrens Title
- Fully detached dwelling on 341sq meters of land
- Purchase off the plan and only pay stamp duty on the land

PACKAGE FROM: \$316,000

Disclaimer: All care has been taken in the preparation of this material. No responsibility is taken for any errors or omissions. Details are subject to change without notification. Images for illustration purposes only. E&EO.

FOR THIS OFFER CALL

TIFFANY: 0422 072 598

Because trust is a must

www.rossdalehomes.com.au