

House & Land Package



Lot 2152 Trident Rd Seaford Meadows

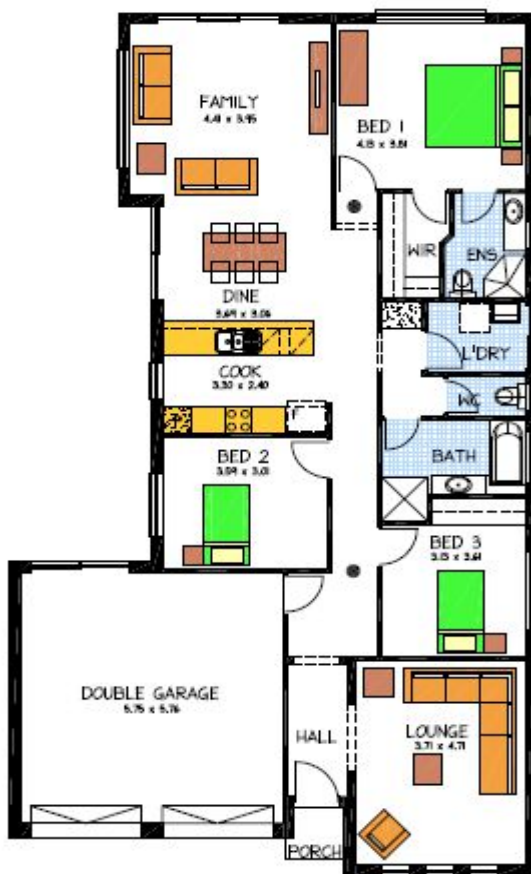
This package includes:

- 377m2 of land in the popular Seaford Meadows Estate
- Rossdale Homes Kyton design built to Select Specifications
- Wind & Corrosion Zone requirements
- Reclaimed water as required by developer
- Healthy footings allowance with all excess soil removed from site
- Stormwater disposal system plumbed to the street
- Perimeter paths and driveway
- Flooring to home with carpet to all bedrooms and lounge and vinyl throughout main living areas
- Auto Roller doors to Garage with internal access into home
- Front elevation to be rendered and painted excluding engaged brick pier as feature
- 100% Absolute Fixed Price Contract

More options available, call today to find out more

PACKAGE FROM: \$399,000

Disclaimer: All care has been taken in the preparation of this material. No responsibility is taken for any errors or omissions. Details are subject to change without notification. Images for illustration purposes only. E&EO.



FOR THIS OFFER CALL

BRAD: 0421 940 398

Because trust is a must

www.rossdalehomes.com.au