



**Rossdale
Homes**

Because trust is a must

House & Land Package



THE VERDUN

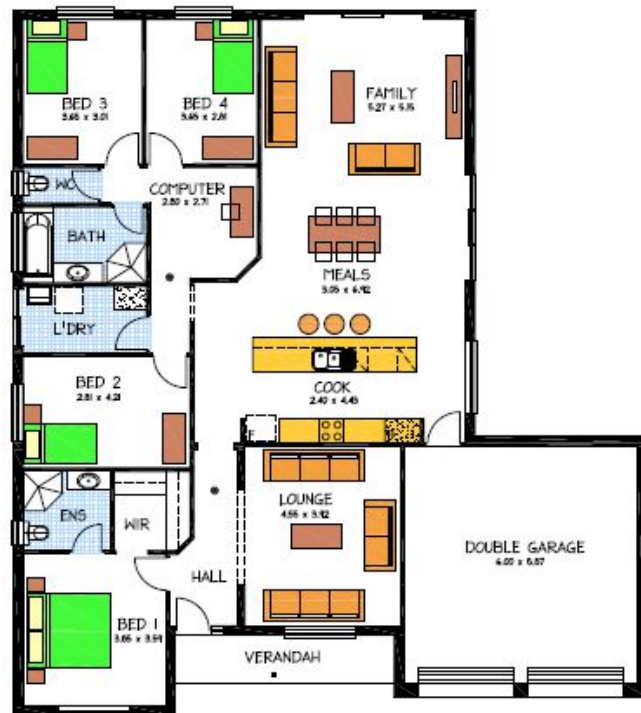
**Lot 445 Hudson Rd
SEAFORD VISTA**

This package includes:

- 540m² of land in the popular Seaford Heights Estate
- Rossdale Homes Verdun design built to Select Specifications
- Double Garage with Automatic roller doors and internal access into your new home
- Open plan design with 4 well sized bedrooms
- Master Bedroom with Walk in Robe & Ensuite
- Formal Lounge overlooking front Verandah
- Front elevation rendered and painted
- Reclaimed water as required in this development
- Instantaneous hot water system
- Galley Kitchen with quality Westinghouse appliances and Retractable Rangehood set in Overhead cupboards
- Healthy Footings allowance with excess soil removed from site
- 25 Year Structural Warranty
- 100% Fixed Price Contract with no hidden costs

More options available for this package, call today for more info.

PACKAGE FROM: \$415,000



Disclaimer: All care has been taken in the preparation of this material. No responsibility is taken for any errors or omissions. Details are subject to change without notification. Images for illustration purposes only. E&EO.

FOR THIS OFFER CALL

BRAD: 0421 940 398

Because trust is a must

www.rossdalehomes.com.au