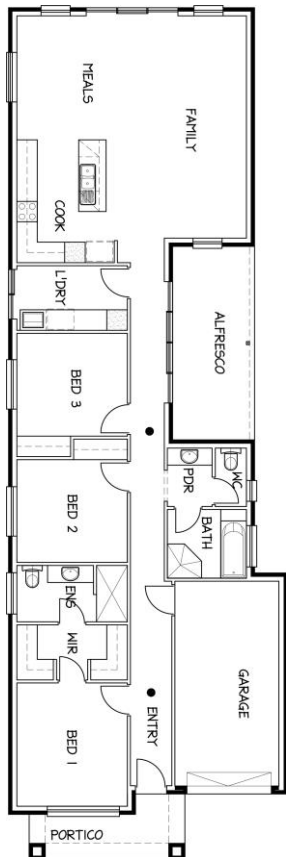


House & Land Package



Lot 42, 14A Browning Street, Tea Tree Gully

This package includes:

Cleverly designed home with strong architectural features

- FIXED PRICE CONTRACT
- All engineering and Footings Included
- Rendered Brick Piers & 3.0m Ceiling to Portico
- 3 Beds and 2 Bathrooms
- Master with Double sided WIR and large 1.65m long shower In Ensuite
- Robes included to Beds 2 and 3
- Full Gourmet Kitchen with functional Island Bench
- Single Garage with colorbond. auto panel-lift door
- House Size 180 m2 and Land Size 388 m2 with 9.15 m frontage
- LED Downlights and 2.7m Ceilings

HOUSE AND LAND PACKAGE \$422,000

IMAGE FOR ILLUSTRATION PURPOSES ONLY

Disclaimer: All care has been taken in the preparation of this material. No responsibility is taken for any errors or omissions. Details are subject to change without notification. Images for illustration purposes only. E&EO.

FOR THIS OFFER CALL

GUY HENDERSON 0411 176 020

GUY@ROSSDALEHOMES.COM.AU

Because trust is a must

www.rossdalehomes.com.au