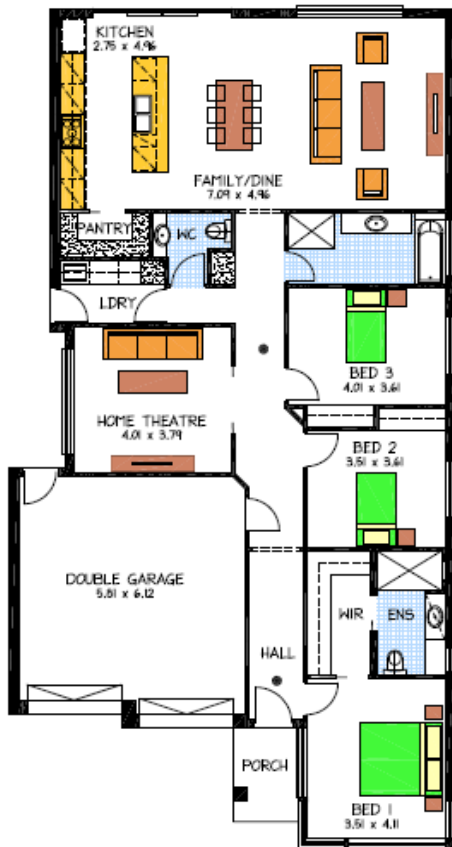


House & Land Package



LOT 23 Greenhills, Victor Harbor

House and Land opportunities available to build your Dream Home with Rossdale Homes

This package includes:

- Façade as image
 - Generous footing allowance (subject to final engineering report)
 - 2.7m high ceilings.
 - 25-degree roof pitch.
 - Stainless steel appliances.
 - Insulation & built in robes.
 - Linen storage cupboards.
 - Overhead cupboards and many more.
- Options available to change the floor plan and front façade, to suit your needs.
- Turnkey options also available

Disclaimer: All care has been taken in the preparation of this material. No responsibility is taken for any errors or omissions. Details are subject to change without notification. Images for illustration purposes only. E&EO.

PACKAGE FROM: \$391,322

HOME: \$246,822 LAND: \$144,500

FOR THIS OFFER CALL

DAVID : 0400 095 483

Because trust is a must

www.rossdalehomes.com.au